



EXPLORING BEYOND SOUTH AMERICA

PURE! ANTARCTICA

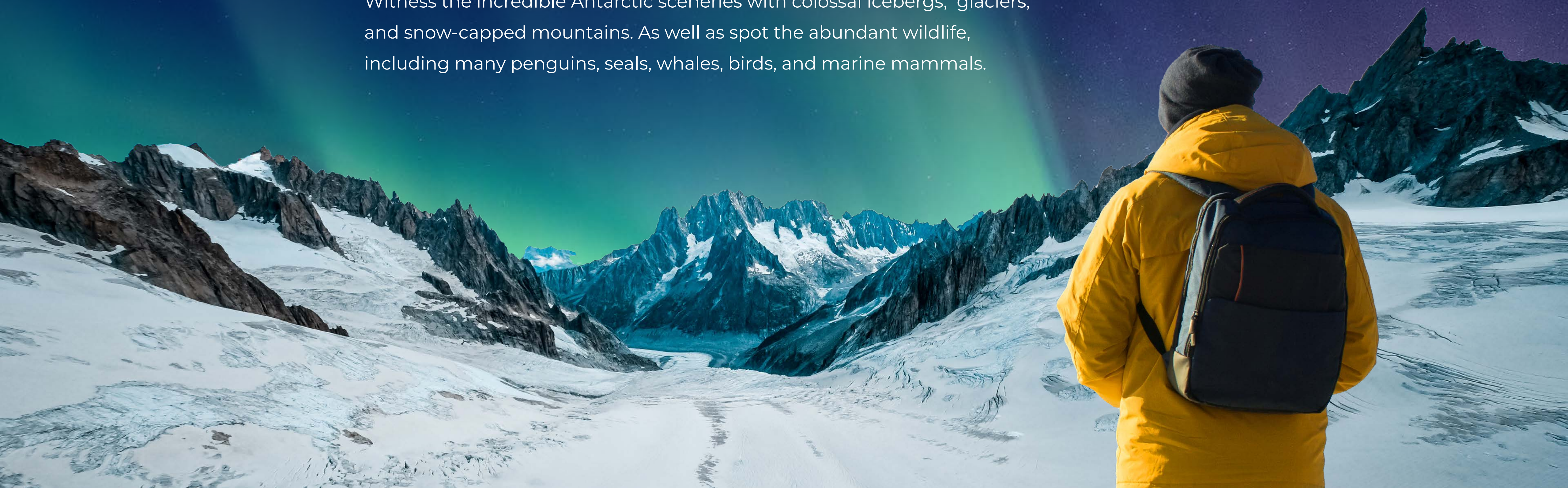
EXPEDITIONS BY CRUISE OR FLIGHT

www.pure-travelgroup.com/pure-antarctica-home

About Antarctica

A frozen paradise awaits to be explored. Join a unique adventure to one of the unspoiled continents on Earth. Its challenging temperatures, remote location, and non-inhabited areas make it possible to discover an unparalleled wilderness.

Witness the incredible Antarctic sceneries with colossal icebergs, glaciers, and snow-capped mountains. As well as spot the abundant wildlife, including many penguins, seals, whales, birds, and marine mammals.



Why Pure! Antarctica

- Local offices in Chile and Argentina for best pre/post tour coordination
- Experienced, detail-oriented travel advisors
- One-Stop-Shop itineraries in South America
- Exclusively business-to-business DMC
- Respect for natural and cultural heritage
- White-label service option
- Tailor-made itineraries
- FITs and/or group tour services



Where is it & how can you get to Antarctica

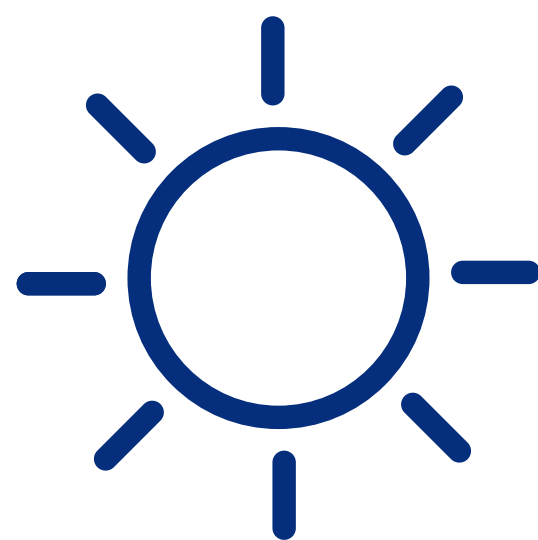
It is located in the southern region of the planet and is surrounded by the Antarctic Circle—a vast territory featuring icy wonders and unique wildlife.

According to your itinerary, you will arrive by flight to Punta Arenas (Chile), or Ushuaia (Argentina) one day earlier. In the afternoon, you will receive a briefing about the expedition and recommendations for your trip, then spend a night at Punta Arenas or Ushuaia, in line with your itinerary. On the next day, you will start your journey to Antarctica, depending on your tour option by cruise or flight.

How to prepare for a trip to Antarctica



Early Booking



Seasons



Choose The
Right Itinerary



Packing List

When to visit

Due to Antarctica's extreme nature, the window of opportunity for visiting the White Continent is fleeting. For that reason, the only time to visit it is during the summer, from November to March with each month offering something unique to make your visit even more memorable. We recommend booking your trip 10-12 months in advance.

SUMMER: November to March

November to December (EARLY SUMMER)

- Pristine white snow
- Penguin rookeries, nests & mating rituals
- Seals in South Georgia
- Dramatic sea ice formations for great photos

December To Mid-February (SUMMER)

- It is prime whale watching time with Humpbacks, Minke, Southern Right and Sperm whales patrolling the surrounding waters.

Mid-February To March (LATE SUMMER)

- Iced-blocked areas continue suitably for exploration
- Shorter day light with intense burst of color
- Prime time to see Humpback whales
- South Georgia: Penguin rookeries are bustling
- Temperatures start to drop again to prepare for winter

Ways to explore Antarctica



Cruises



Flights

- CRUISE

Ocean Endeavour

The Ocean Endeavour allows you to explore Antarctica while enjoying the class and comfort of a four-star hotel. Featuring one expedition team member for every eight travelers, you can take full advantage of one of the best staff-to-passenger ratios in Antarctica, with a greater level of personal service and more time with our onboard experts.



Specifications:

Ocean Endeavour

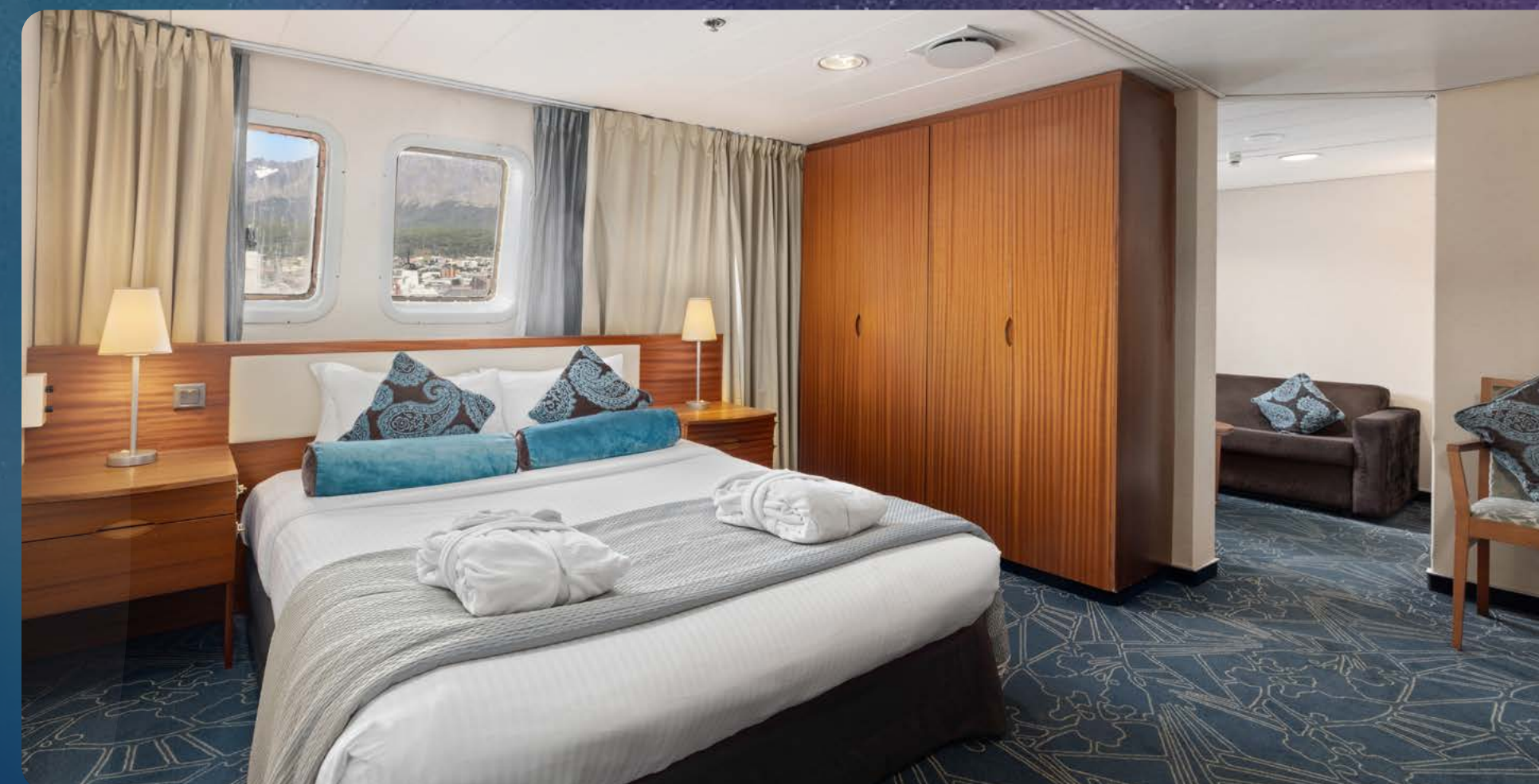
Special features: Flexibility for solo travelers, spacious social areas, an array of entertainment, health and wellness options; a large mudroom, a large fleet of zodiacs, carbon offset expeditions with a strict sustainable policy.

Capacity: 200 guests

Length: 137m (332ft)

Cabins: 114

Crew: 124





Itineraries

Ocean Endeavour

12 Days/ 11 Nights - Best of Antarctica - The 7th Continent

14 Days/ 13 Nights - Journey to the Antarctic Circle - Peninsula in-depth

14 Days/ 13 Nights - Unchartered Antarctica - East & West Peninsula

21 Days/ 20 Nights - Ushuaia Antarctica, Falklands & South Georgia - Wildlife Adventures & Wonders

- CRUISE & FLIGHT

Ocean Nova

A refurbished vessel boasts a truly adventurer spirit for unparalleled Antarctic expeditions. Its Scandinavian design offers cozy cabins and facilities while you sail on unpredictable cool waters. Have an intimate encounter with the White Continent as the ship allows a limited capacity and reduces the trip time as it includes a direct flight to this destination in the itinerary, avoiding the rough seas of the Drake Passage.



Vessel Specifications: Ocean Nova

Special features: Air-cruise experts, boutique ship experience, Explorers House, glass-enclosed observation lounge, an array of entertainment options.

Capacity: 67 guests

Cabins: 34

Length: 73m (239.5 ft)

Crew: 46



Aircraft Specifications: Flight

Model: BAE 146-200, AVRO RJ 85, AVRO RJ 100

Capacity: 76 passengers maximum

Length: 28.55 m (93 ft 8 in)

Seating Category: Preferred – Reserved Seating,
Economy – Open Seating

Flight time: Two hour-flight from Punta Arenas
to King George Island



Itineraries

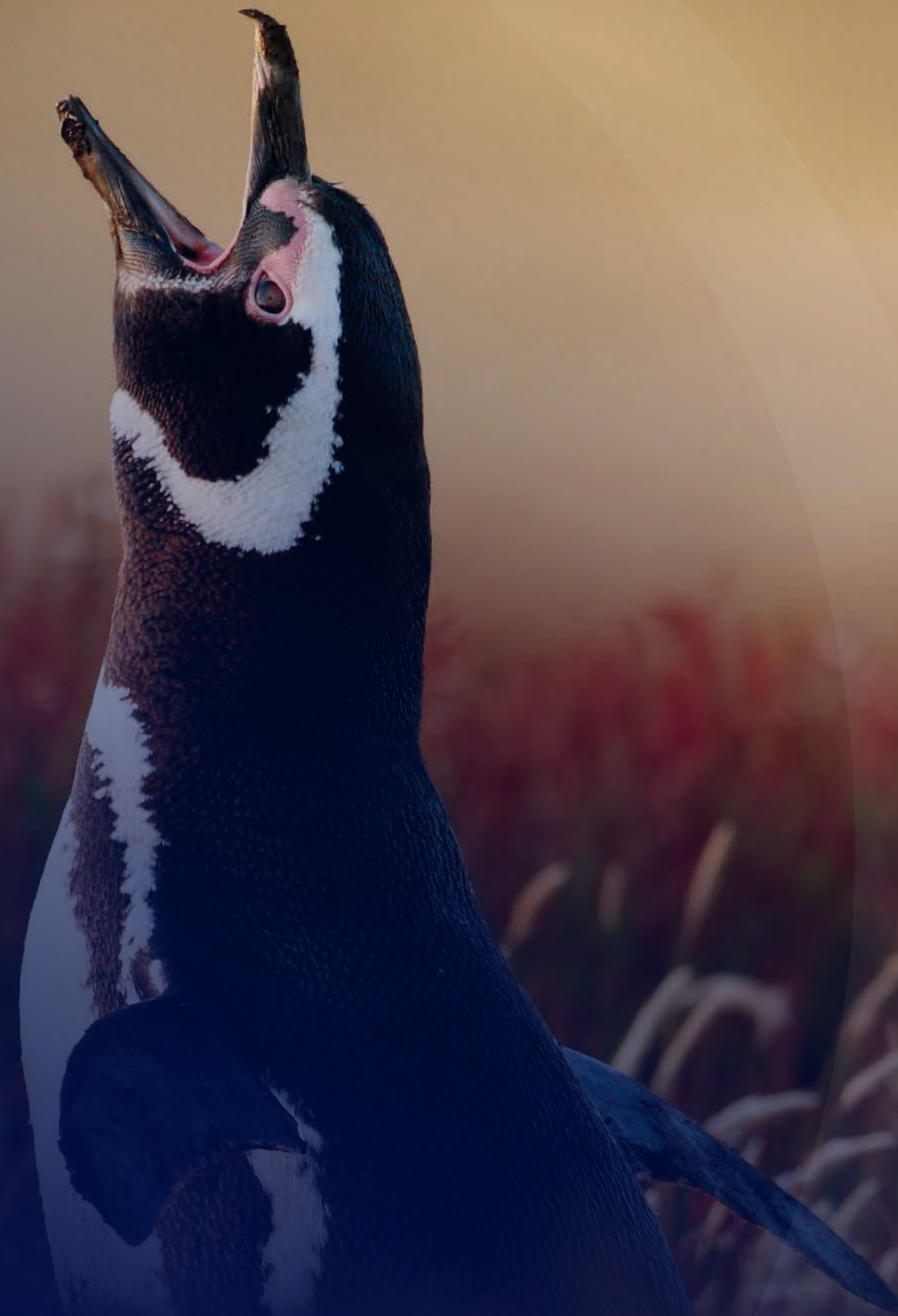
Ocean Nova



6 Days/ 5 Nights - Antarctica Express Air-Cruise

8 Days/ 7 Nights - Classic Antarctica Air-Cruise

10 Days/ 9 Nights - Polar Circle Air-Cruise



- CRUISE

Ocean Victory

Embark on an unforgettable journey where luxury meets sustainability. This extraordinary cruise as a comfort class certified vessel is committed to eco-friendly practices and innovative travel options. It includes spacious staterooms with panoramic views of the ocean, culinary delights at specialty restaurants, and the opportunity to relax in the lavish wellness area, immerse yourself in knowledge at the lecture lounge, and join the outdoor activities available.



Specifications:

Ocean Victory

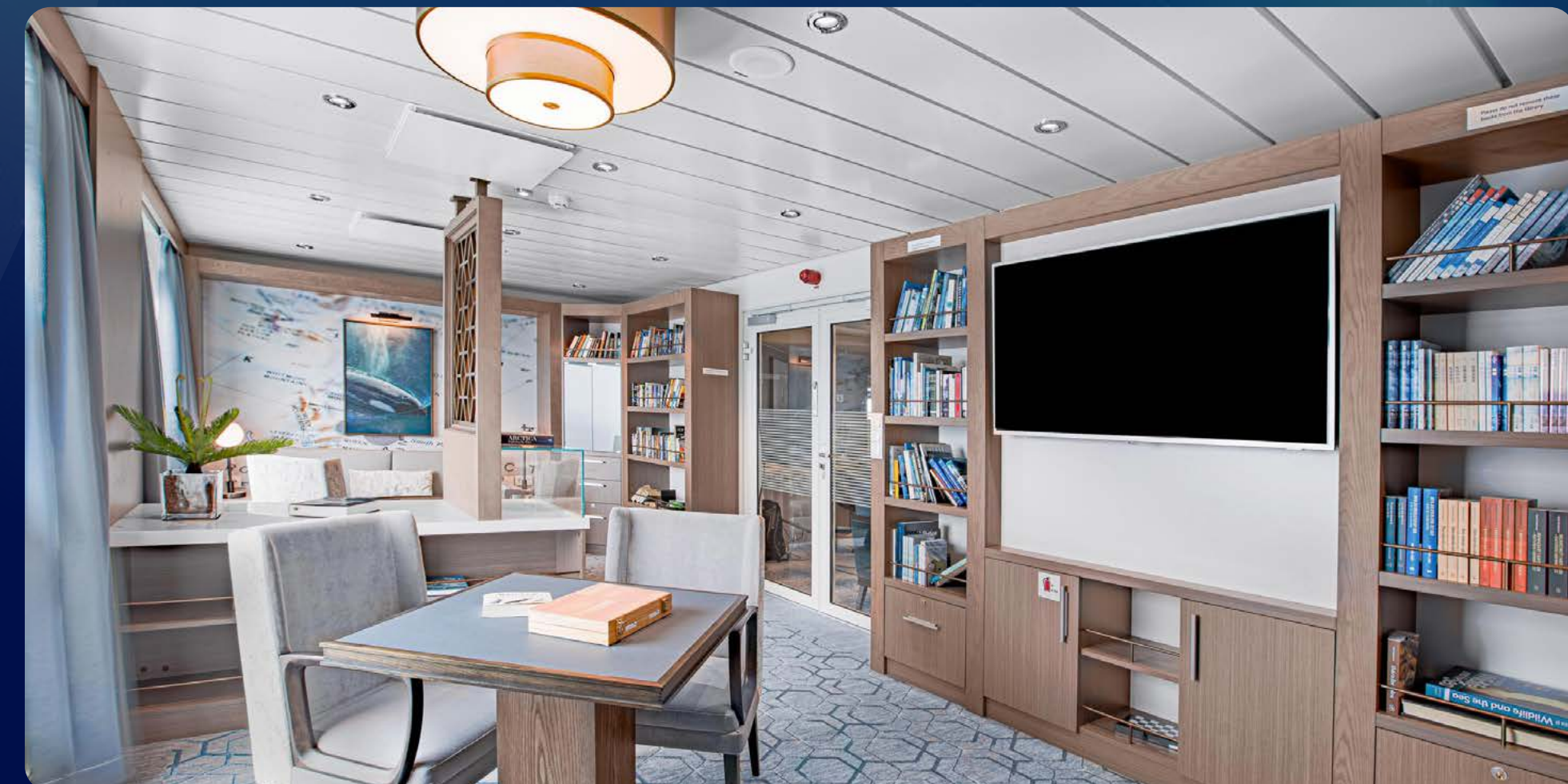
Special features: Low-energy vessel, sustainable practices during the expedition, unobstructed panoramic views in all cabins, intimate atmosphere, specialty restaurants, hydraulic observation platforms, onboard & optional activities.

Capacity: 175 guests

Length: 104.4m (342.5 ft)

Cabins: 93

Crew: 100





Itineraries

Ocean Victory

-
- 9 Days / 8 Nights** - Giants of the Southern Ocean: Whale Voyage
 - 10 Days / 9 Nights** - South Shetland Islands & Antarctic Peninsula
 - 11 Days / 10 Nights** - Explorers Cruise: The Antarctic Peninsula & the Extreme Wedell Sea
 - 11 Days / 10 Nights** - South Shetland Islands, Antarctica - Crossing Circle
 - 12 Days / 11 Nights** - The Ultimate Antarctica Experience
 - 18 Days / 17 Nights** - Antarctica, South Georgia & Falkland Islands
 - 18 Days / 17 Nights** - The Epic Antarctica & South Georgia Adventure

- CRUISE

Ocean Albatros

Prepare for an exceptional experience onboard the Ocean Albatros. Its eco-friendly structure and initiatives contribute to the reduction of the carbon footprint while offering the ultimate comfort and luxury to its guests. Enjoy exquisite gastronomy in the restaurants, and relax in the wellness area, as well as all the facilities and activities available. Sail in style and elegance to discover Antarctica in an intimate setting with exceptional and personalized service.



Specifications:

Ocean Albatros

Special features: Low-energy vessel, sustainable practices during the expedition, unobstructed panoramic views in all cabins, intimate atmosphere, specialty restaurants, hydraulic observation platforms, onboard & optional activities.

Capacity: 169 guests

Cabins: 94

Length: 104.4m (342.5 ft)

Crew: 120





Itineraries

Ocean Albatros

9 Days / 8 Nights - Giants of the Southern Ocean: Whale Voyage

10 Days / 9 Nights - South Shetland Islands & Antarctic Peninsula

11 Days / 10 Nights - Explorers Cruise: The Antarctic Peninsula & the Extreme Wedell Sea

11 Days / 10 Nights - South Shetland Islands, Antarctica - Crossing Circle

12 Days / 11 Nights - The Ultimate Antarctica Experience

18 Days / 17 Nights - Antarctica, South Georgia & Falkland Islands

18 Days / 17 Nights - The Epic Antarctica & South Georgia Adventure

Antarctica Flights

Enjoy Antarctica from a different perspective, witnessing panoramic views, vast ice fields, fascinatingly shaped floating icebergs, and imposing glaciated mountains. Often Antarctica Flights start from Australia, and take approximately 3 to 4 hours to reach the Antarctic icy landscapes, while a South Pole Scenic flight route will take approximately 16 hours.



Aircraft Specifications: Antarctica Flights

Model: Qantas Boeing 787-9 Dreamliner

Capacity: 236 seats

Length: 28.55 m (93 ft 8 in)

Seating Category: Economy Class-Limited View, Economy Class Wing, Economy Class No Wing, Premium Economy-Class, Business Class, and Premium Business Class.

Meals: Two full-service Qantas meals plus in-flight snacks/ champagne, wine, beer, spirits, soft drinks, and full bar service onboard.



Our Top Recommended Experiences

Find exhilarating entertainment options during your journey to the White Continent. These activities include unbelievable and daring outdoor experiences such as ice camping, sea kayaking, snowshoeing, or different excursions to explore the icy surroundings.



Snowshoeing



Ice Camping



Sea Kayaking



The Polar Plunge



Whale-Watching

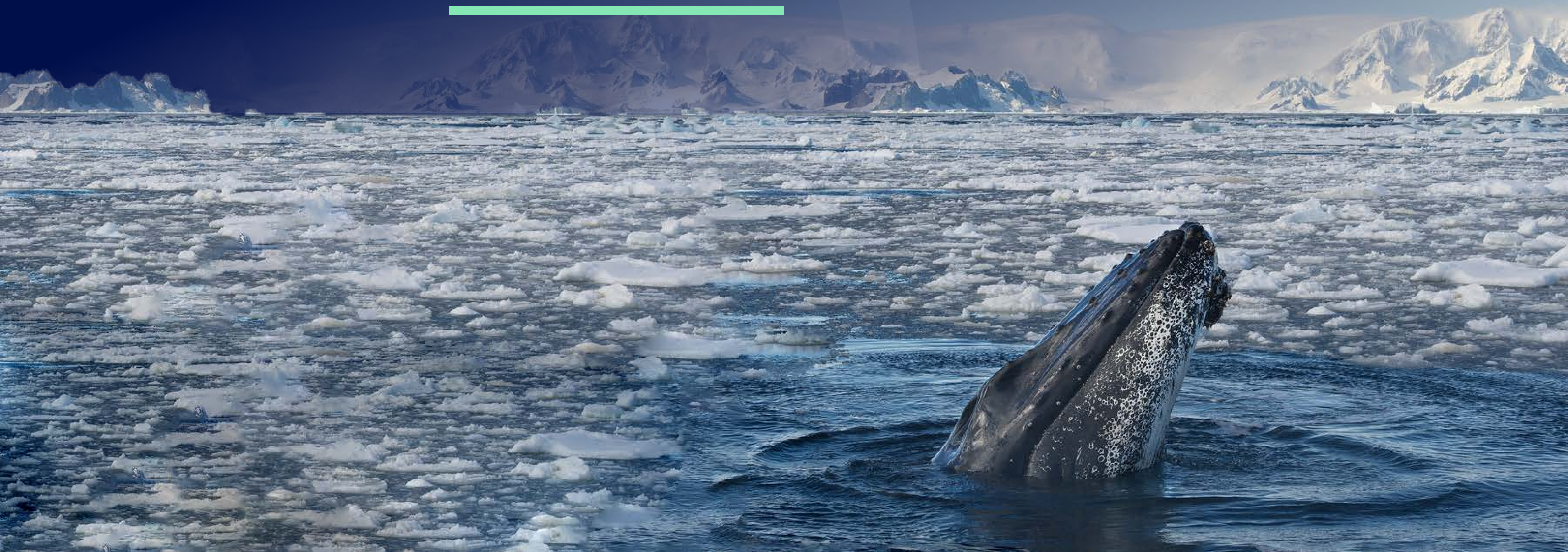


Photo Workshops





info@pure-chile.com



sales@pure-argentina.com



+56 9 5681 6943



+54 9 11 5642 0549

Visit our [Pure! Antarctica](#) tab on our website for more information and download our detailed brochures.

www.pure-travelgroup.com/pure-antarctica-home