

 Pure!
Antarctica

EXPLORING BEYOND SOUTH AMERICA



Ocean Victory & Ocean Albatros
Modern & Eco-friendly Cruises to Antarctica

www.pure-travelgroup.com

OUR FLEET

OCEAN VICTORY

ALL THE COMFORTS OF MODERN LUXURY CRUISING – With a total of 93 comfortable and spacious staterooms for our guests, all with an unobstructed panoramic view of the ocean, most with their own balcony, two restaurants, a wellness area including a heated swimming pool, two jacuzzis, spa, an Albatros Nordic Bar an elegant lecture lounge, this ship truly caters for all the needs of today's explorers.

A VESSEL SPECIFICALLY DESIGNED TO OPTIMIZE THE EXPEDITION EXPERIENCE – The patented X-bow offers a more comfortable sailing journey and helps to prevent passengers' discomforts, particularly when crossing the notorious Drake passage! It also helps to keep our speed and planned expedition schedule on rough seas. As a side benefit, the X-bow design means our guests are able to enjoy an unobstructed view when standing on the observation platforms, and ultimately bringing them closer to birds and wildlife.

COMFORT CLASS MEANS LESS NOISE & VIBRATION – The Ocean Victory & Albatros are 'comfort class' certified vessels, meaning they operate with the industry's lowest noise and vibration levels.

ONE OF THE MOST ENVIRONMENTALLY FRIENDLY VESSELS – The Ocean Victory and Ocean Albatros featured by innovation and sustainable travel, are 'clean-ship certified' and carry tier-3 compliant engines. Additionally, the engines of both ships only use light fuels (MGO).





— OUR FLEET — OCEAN ALBATROS

ALL THE COMFORTS OF MODERN LUXURY CRUISING – With a total of 94 comfortable and spacious staterooms for our guests, all with an unobstructed panoramic view of the ocean, most with their own balcony, two restaurants, a wellness area including a heated swimming pool, two jacuzzis, sauna and a spa, and multiple bars and a modern lecture lounge, this ship truly caters for all the needs of today's explorers.

OCEAN ALBATROS IN ANTARCTICA FROM 2023 – Ocean Albatros, just like its sister vessel, Ocean Victory, is a revolutionary and stylish cruise ship that combines the advantages of a small expedition vessel with the stability and comfort of a larger cruise ship. With a maximum capacity of 169 passengers, this compact design ship offers an intimate atmosphere with great personal

service featuring a 1:8 guide-to-guest ratio – one of the best in our industry. It is easy to get around without any crowds and waiting lines, but at the same time, this vessel offers the stability and smooth ride of a bigger ship with all the luxury comforts of today.

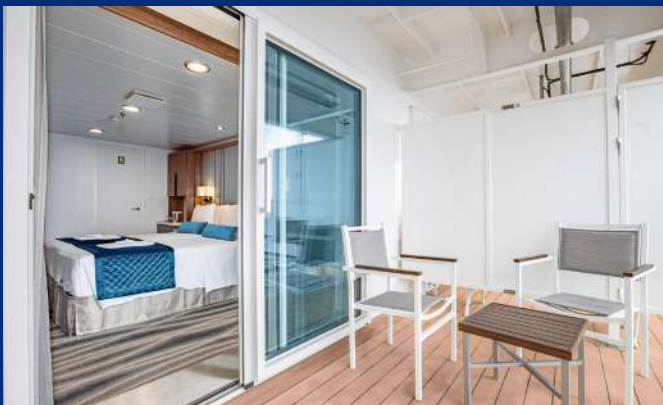
THE TECHNICAL DETAILS – With the highest Polar code 6 and Ice class 1A, Ocean Victory & Albatros are the ideal vessels for small-ship expedition cruising due to their sturdy construction and X-Bow®- Infinity class. It provides high stability in rough weather and allows for the smoothest movements on high waves, and a Solas classification including all 'Safe Return to Port' safety features. The vessels are part of a brand-new generation of low-energy vessels, with four diesel and two electro engines, all controlled electronically to optimize speed and fuel consumption.





— OUR FACILITIES —

SUITES & STATEROOMS



LUXURIOUS CABINS

With nine different types of modern, exclusive cabins, all with unobstructed views of the pristine landscape, exploring the polar regions has never been so enjoyable. Disconnect from your daily life and be submerged in an otherworldly environment of comfort, lushness, and magnificence.

Our cabins are designed for ultimate comfort and luxury and cater to all guests, regardless of whether they are travelling solo or with friends and family.

"Ocean Victory and Albatros are purpose-built expedition ships with focus on the outside experience, featuring large windows in all public areas as well as cabins. The interior designs are light and pleasing with darker contrasting accents and are specifically designed to bring adventure seekers comfortably to their many exotic destinations."

- Tomas Tillberg, Managing partner at Tillberg Design & Associates



EXCLUSIVE SUITE SERVICES*

- Unlimited access to specialty restaurant on Deck 8
- Minibar replenished daily
- Free laundry
- Free pressing
- Free boot cleaning service
- Daily canapés served in room
- Upgraded amenities: hair/lotion products
- Unobstructed panoramic view in all cabins

**Only Premium Category and A & B suites*





— OUR FACILITIES —

SERVICE & WELLNESS



ENJOY A TREATMENT AT THE POLAR SPA AFTER TRAINING IN THE GYM WITH A VIEW OF THE ICY LANDSCAPE... A FEAST FOR YOUR EYES AND BODY.

After an unforgettable expedition during the day, our guests can relax in the heated swimming pool and two jacuzzis. Alternatively, they can enjoy being pampered in the Polar Spa with some unique Albatros-only treatments, like a Midnight Sun or a Fire and Ice Massage. For the active explorer, we offer a fully equipped gym with some of the best views in the industry, meanwhile shoppers can enjoy the Albatros Boutique.

Throughout the expedition, a selection of lectures, screenings and activities will keep your brain interested and entertained. Of course, onboard, we have several bars and a large selection of drinks, featuring wine tasting menus developed in partnership with French wine producer and expert Gerard Bertrand - a leader in producing biodynamic farmed wines.



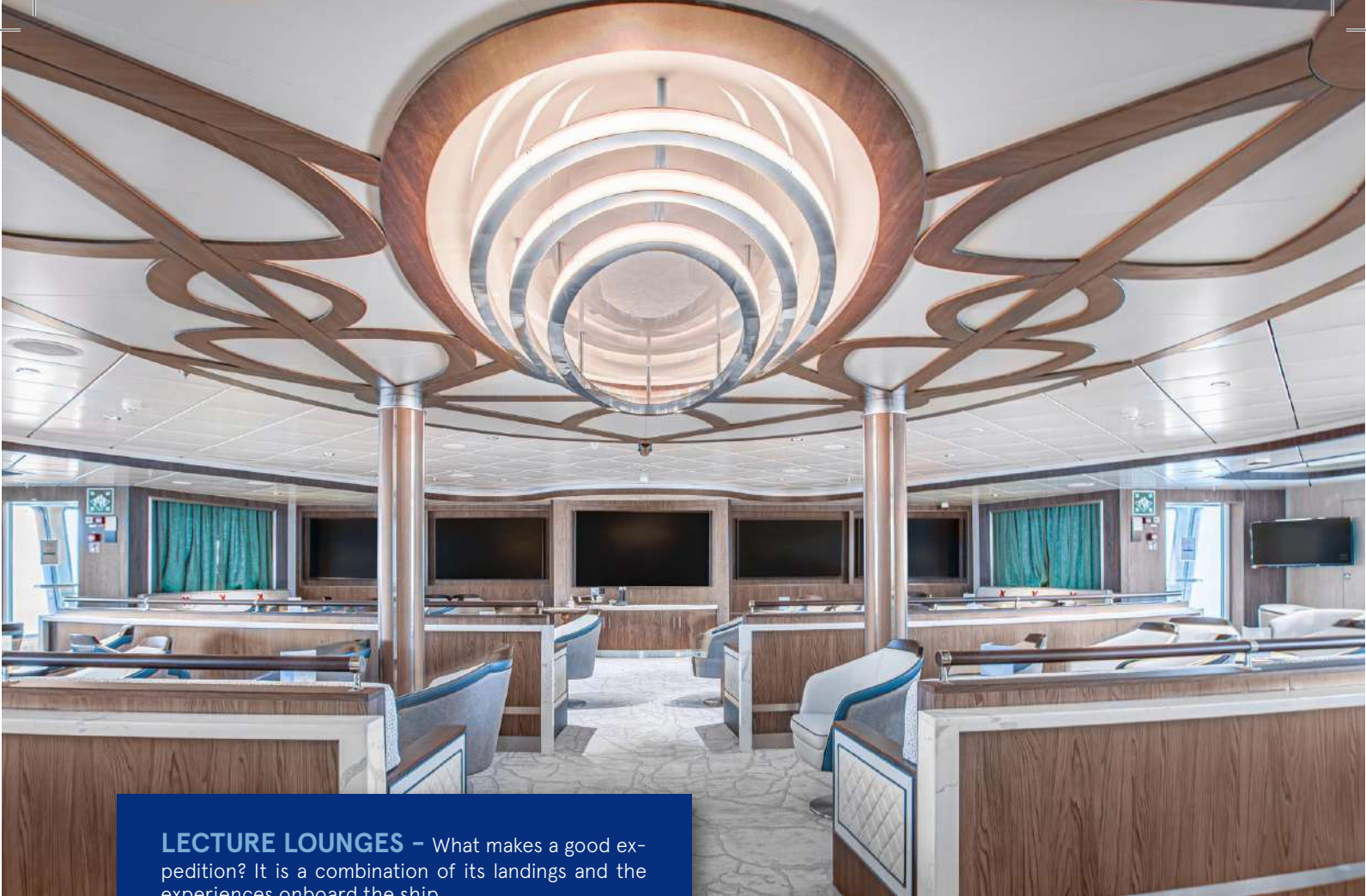


BARS & SPECIALITY RESTAURANT

The Nordic lounge brings warm Nordic hospitality to the Antarctic. Offering a large choice of drinks, including wine-tasting menus from Gerard Bertrand, this is the perfect place to relax after an unforgettable day and make new friends... or like we say in Denmark: *Hygge*.

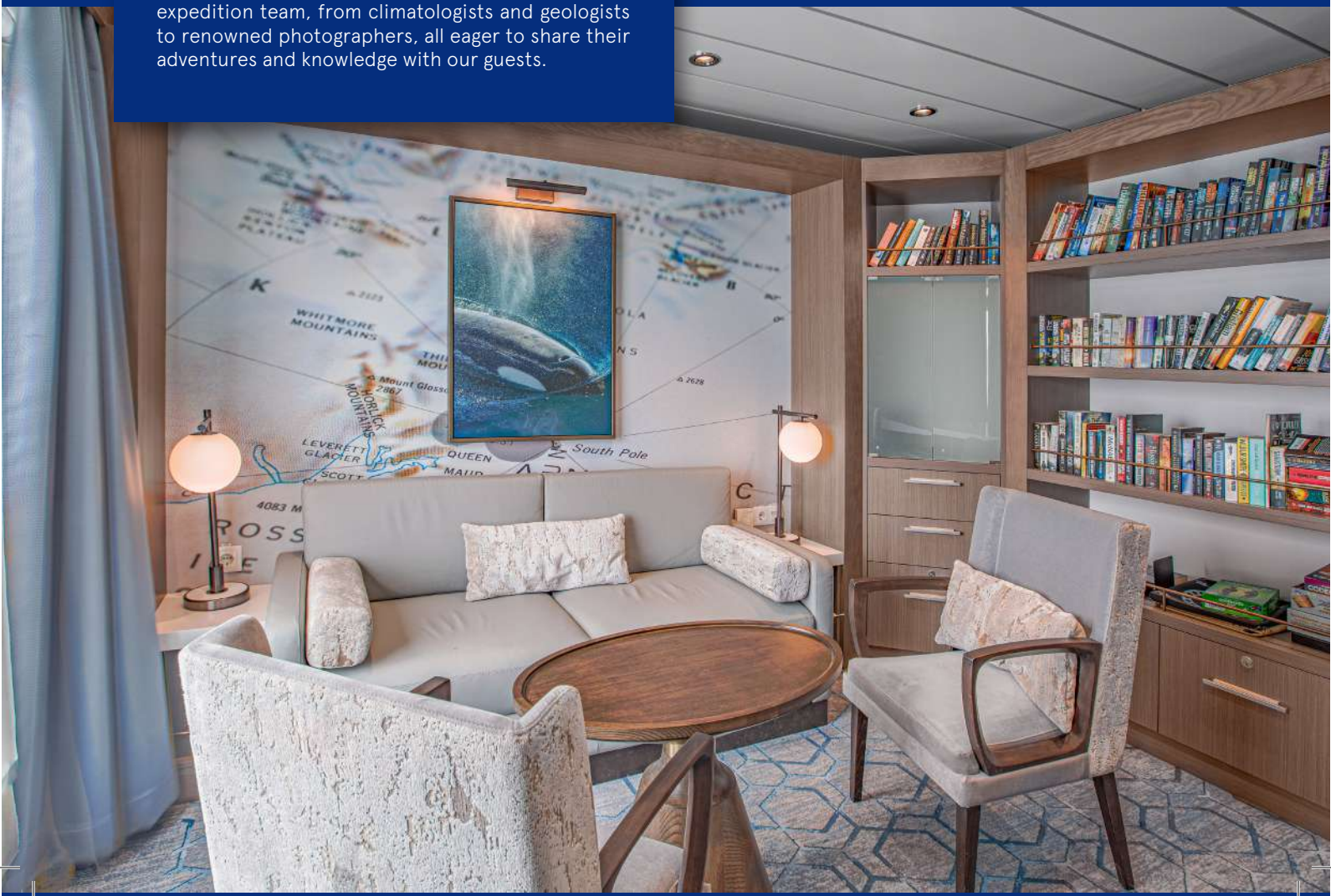
Our speciality restaurant on Deck 8 features unforgettable views and a unique way of food preparation on lava stone.





LECTURE LOUNGES – What makes a good expedition? It is a combination of its landings and the experiences onboard the ship.

Our cruises have an amalgam of experts in our expedition team, from climatologists and geologists to renowned photographers, all eager to share their adventures and knowledge with our guests.



— OUR FACILITIES —

LOUNGES & RELAXATION

OBSERVATION LOUNGES – Celebrate the dream polar adventure, engage in conversation and relax while admiring the icy landscape of the polar regions. At our Nordic Observation Lounge, we aim to create a fun and enjoyable atmosphere with varied cocktails and drinks, appetizers and small events.

LIBRARIES – Honoring the great explorers, the lecture room allows for an adventure within an adventure. Here you can find sagas, narratives and practical information on the polar regions, in various languages and subjects. From encyclopedias of the polar wildlife and fauna to narrations of the many challenges faced by the first expeditions, this is the perfect location for entertaining your brain while we sail.





— OUR FACILITIES —

OBSERVATION PLATFORMS & BIRD'S-EYE VIEW

OBSERVATION DECKS are essential to an optimal expedition experience. Ocean Victory and Albatros offer plenty of observation space, for the best views of the polar landscapes. Our vessels provide an unbeatable expedition experience with rapid zodiac loading arrangements and fantastic observation areas, including unique hydraulic platforms and abundant observation deck space. Guests can also enjoy the magnificent Deck 9 viewing platform and front location hydraulic observation platforms.

These unique features will make the Infinity class vessels stand out from any other expedition ships. The combination of zero-speed stabilizers, dynamic positioning ("virtual anchoring"), and 5 zodiac loading platforms mean that our guests can be in their zodiacs faster than any other ship of comparable size. Not only will guests have more time to enjoy exploring off the ship, but also we can react faster to unexpected wildlife encounters.





"The next infinity class vessels delivered from a series of newbuilds, offer a one-of-a-kind and complete immersive experience. Technologically advanced, with a unique design and beautiful European interiors, these vessels remain true to what Expedition Cruising should be all about."

- Søren Rasmussen, Founder & Owner, Ocean Victory & Ocean Albatros Cruises



— OUR FACILITIES —

A FEAST FOR YOUR SENSES

OUR CAREFULLY DESIGNED MENU IS CURATED FOR THE BEST DINING EXPERIENCE, WITH A FOCUS ON FRESHNESS AND DIVERSITY.

Onboard Ocean Victory and Albatros, you will find kitchen professionals and chefs who take great pride in bringing gastronomic experiences to keep your tastebuds satisfied.

When the first explorers began their undertakings, they had little choice and even less variety in their nourishment options. Dining at the some of the remotest parts of the world was not a delicacy, but a duty necessary for survival. Luckily for us, today is another story. Meals are served in our bright and spacious restaurants, surrounded by wonderful views.

Dinner always starts with delicious hot soups, cold cuts and crisp, fresh salads. Several choices of entrées are offered each evening. To accommodate different tastes and dietary requirements, guests can choose from a selection of meat, fish and vegetarian options.

After dinner, freshly prepared desserts, including ship-made ice cream or cakes... A great way to end a meal and satisfy any sweet tooth!





"Ocean Victory & Albatros boasts exciting new gastronomic delights, a top deck panorama 'lava rock' restaurant, where our guests enjoy a delicious, healthy, nutritious and sensational tasting experience cooked directly at their table, as well as degustation wine-tasting menus featuring Gerard Bertrand wines".

- Greg Carter, Chief Commercial Officer,
Ocean Victory & Ocean Albatros Cruises



ACTIVITIES

EXPEDITION EXPERIENCE



ACTIVITIES ON BOARD

Onboard the vessel, excitement continues through a series of activities that will keep your brain and body entertained. From a visit to the captain's bridge, a slideshow presentation at the end of each voyage featuring the best-of picks of our photographer's shoots, interactive activities (e.g. knot-tying, art workshops), as well as welcome and farewell cocktails.



LECTURES & WORKSHOPS

We are passionate about the world around us and our onboard lectures form an essential part of Pure! Antarctica's voyages. The Polar Regions are vulnerable to the growing number of visitors and we therefore offer a broad range of enrichment lectures and workshops so our guests not only have transformative experiences but also learn about relevant topics such as wildlife, environment and history, navigation, photography, geology, glaciology, culture and much more!



ZODIAC CRUISES

Zodiac boats are not only used for shuttling guests to/from land. Zodiac cruising is a great way to venture out and get even closer to some of the magnificent sights during your voyage. It is also great for wildlife spotting and for taking in the dramatic sights from up close. The Zodiac boats are perfect for cruising around in the Polar Regions, giving you the chance to see the world from a new and spellbinding point of view.



POLAR PLUNGE

Most of our adventure-seeking guests look forward to the Polar Plunge onboard our expedition cruises. Imagine jumping into the freezing waters surrounded by the icebergs of the Polar regions for a refreshing sensation. It's a guaranteed once-in-a-lifetime experience. For those who take the plunge, you will receive a certificate as a souvenir to remember your achievement.

ACTIVITIES

OPTIONAL

PHOTO PROGRAM



We always have a dedicated expedition photographer onboard to document the voyage and share their passion for photography through lectures and during landings and zodiac cruises. The Polar Regions are filled with mesmerizing landscapes and amazing wildlife, and our expedition photographer is available to help elevate your photography and beautifully capture the moments of your voyage. Please note: Additional fees apply.



KAYAKING



Glide through the waters and take in the views of the surrounding icebergs and marine-life. You will be supported by our kayaking guides who will ensure your safety during the outing, weather permitting, of course. Please note: Additional fees apply.



ICE SHEET CAMPING



Cuddled up in a warm, snug and weatherproof sleeping bag, listening to the sounds of distant whale blows, penguins' squeaks and shifting ice-bergs, Antarctic Open Air Camping with Pure! Antarctica is truly a memorable experience. Once we decide on the location within the set perimeter, you will level out your own spot in the snow, fix the base cover, insulated pad, and warm sleeping bag, and get ready for a night like no other. Please note: Additional fees apply.



SNOWSHOEING/HIKING



Soak up the fresh air and incredible Polar landscapes whilst exploring on foot. These guided hikes are perfect for those wanting to be surrounded by nature. Expect to cross streams, navigate uneven and rocky terrains and/or hilly areas – the views will take your breath away. Snowshoeing is an activity that allows you to hike across soft, powdery snow, reaching unique vantage points without the hassle of sinking into deep snow. Please note that this activity is only possible sometimes, weather permitting. Please note: Additional fees apply.



OUR COMMITMENT TO SUSTAINABILITY



Sustainability is considered a core value for Pure! Antarctica as part of Pure! Travel Group. Our staff apply eco-friendly practices in the daily life of our offices.

Besides, we provide tailor-made travel experiences that truly take care of the pristine Antarctic environment. Therefore, our continuous compromise with responsible tourism, makes it possible to include in our cruise-ship portfolio the Ocean Victory and Ocean Albatros vessels, built with consideration towards the environment and the lowest carbon emission per passenger in the expedition cruise industry.

— DESTINATIONS —

ANTARCTICA



An experience like
nowhere else on Earth

AN EXTRAORDINARY ADVENTURE TO THE SOUTHERNMOST PART
OF THE WORLD BRINGS FORTH COLOSSAL ICEBERGS, UNBELIEVABLE
SEASCAPES, AND THE UNPREDICTABLE NATURE THAT POLAR EXPLORERS
SPENT THEIR LIVES TRYING TO CONQUER.

AN ICY WONDERLAND at the end of the world, which for many centuries wasn't explored and became the subject of admiration and obsession of the first world expeditioners, Antarctica only acquired its official name in the 1800s, a Romanized version of its Greek title, which actually means 'opposite to the North'.

For some experienced travelers, Antarctica is the *crème de la crème* when it comes to exploring the world, not just because of its remote location, its difficult access and challenging temperatures, but also because it is the only non-inhabited continent in our planet (apart from a small research station, even now when some other areas are over populated).

Antarctica has no indigenous population and there is no evidence that it was seen by humans until the 19th century. The many expeditions aiming to be the first to reach the South Pole in the 1900s provide us with stories of survival and wondrous adventures worthy of high acclaim in the history books.

Although this vast stretch of the planet remains the stuff of distant dreams for many, its mysterious nature is reachable due to the reduction in sea ice during the summer months, which our strong, ice-classed expedition vessels, Ocean Victory and Albatros can easily maneuver, ensuring we get close to the dramatic coastlines.

Zodiac cruising and shore landings are an important and considerable part of the planned itinerary, enabling all expedition guests to set foot several times on the Antarctic continent, as well as the many surrounding sub-Antarctic islands.

Can you visualize the splendor of the coldest continent appearing before your eyes? With its mighty tabular icebergs, it is a sight like no other. Not only will we cross the unbelievable Drake Passage, but we will also have the opportunity

to witness the white shimmer of Antarctica looming on our horizon, the presence of wildlife multiplying by tens of thousands with many species of lively penguins, inquisitive seals, nesting birds and the spray of marine mammals. The sub-Antarctic and Antarctic islands are a nature photographer's paradise.

Antarctica's beauty exceeds everything imaginable. Vastly different from the Arctic, 98% of the Great White Continent is covered in ice with glaciers, smooth ice-sheet and glaciated mountains with volcanoes. Crisp white icebergs and deep blue seas, flank the barren, rocky coastlines, which are home to moss, lichens, liverworts and even two small flowering plants – the Antarctic pearl wart and Antarctic hair grass. The sub-Antarctic islands and Falklands have tundra-like landscapes.

Due to the harsh climate, there are no terrestrial mammals, yet a plethora of wildlife still call Antarctica home – at least in the warmer summer months when temperatures hover just above freezing! The prolific birdlife, penguin colonies and marine mammals, such as whales, porpoises and seals, provide rewarding wildlife observation.

There will typically be crisp, autumn-like weather in Patagonia and the Falkland Islands, and near-freezing temperatures on the Antarctic Peninsula. Antarctica is a frozen desert where winds shape the surface of snow and ice, and average annual precipitation is only 10cm.

When Ocean Victory and Albatros return to Tierra del Fuego and Ushuaia, we pass close to the mythical Cape Horn – the southernmost point of South America; a celebrated maritime landmark. By the time you return home from this remarkable journey, your perspective of our planet will have changed forever, and we are certain the sights and experiences of this trip will find a special place in your heart.



ANTARCTIC DESTINATIONS



SOUTH SHETLAND ISLANDS & ANTARCTIC PENINSULA



DEPARTING FROM USHUAIA in Argentina, we cross the mighty Drake Passage en-route for the South Shetland Islands, making Zodiac landings at penguin rookeries, research stations and fascinating lookouts along the way. Continuing southward, deep into the inlets of Antarctica, we pass the famous Gerlache Strait, where 3000-ft ice cliffs rise straight out of the still water. On no other journey can you experience so much pristine nature and varied wildlife in so few days!

When our vessels return to Tierra del Fuego and Ushuaia, we pass close to the mythical Cape Horn - the southernmost point of South America; a celebrated maritime landmark.

Any voyage to Antarctica is an adventure, but with a maximum capacity of 174 guests aboard Ocean Victory & Albatros, this cruise offers a unique experience for the few. Shore landings, excursions, lectures and whale safaris are easily accommodated to help you enjoy a matchless expedition experience.

HIGHLIGHTS

- Visit the Antarctic South Shetland Islands
- Explore the Antarctic Peninsula
- Top wildlife destination in the world with penguins, seals, whales and albatrosses
- Icebergs and glaciated mountains
- Many Zodiac excursions and landings
- Strong expedition ship that enables access to remote areas
- Onboard activities while at sea
- Lectures, photo workshops and wildlife spotting

INCLUSIONS

- 10-day cruise with accommodation in a shared double cabin with private facilities
- All Zodiac landings and excursions as per itinerary
- Expedition parka
- Rubber boots on loan basis
- English-speaking expedition team
- Guiding and lectures by our expedition leader and team
- Full board on the ship - breakfast, lunch and dinner
- Free tea, coffee and afternoon snacks
- Port and authority fees and taxes





EXPERIENCE THE INCREDIBLE wildlife in icy waters, stunning mountain scenery and gigantic icebergs during 11 action-packed days. Departing Ushuaia in Argentina, we cross the mighty Drake Passage on our way to the South Shetland Islands, where we plan to make our first Zodiac landing.

From here we navigate the South Shetland Islands and the Antarctic Peninsula. We plan to make landings at penguin rookeries, research stations and fascinating sights that allow us to enjoy the spectacular views. Continuing eastward, we will explore the Antarctic Sound with its mighty tabular icebergs and enter the Weddell Sea in search for wildlife.

On our way back, we plan to follow in Ernest Shackleton and rest of the Endurance crew's wake as we navigate close to Elephant Island. On no other journey can you experience so much pristine nature and varied wildlife in so few days!

INCLUSIONS

- 11-day cruise with accommodation in a shared double cabin with private facilities
- All Zodiac landings and excursions as per itinerary
- Expedition parka
- Rubber boots on loan basis
- English-speaking expedition team
- Guiding and lectures by our expedition leader and team
- Full board on the ship - breakfast, lunch and dinner
- Free tea, coffee and afternoon snacks
- Port and authority fees and taxes

HIGHLIGHTS

- Includes the South Shetland Islands
- Explore the Antarctic Peninsula
- Visit an area few humans have ever seen
- Navigate into as much of the Weddell Sea's remote nature as possible
- Real expedition, where shifting ice decides our route
- Unique wildlife destination with penguins, seals, whales and birdlife
- Giant tabular icebergs and glaciated mountains

EXPLORERS CRUISE: THE ANTARCTIC PENINSULA & THE EXTREME WEDDELL SEA



ANTARCTIC DESTINATIONS

ANTARCTICA, SOUTH GEORGIA & FALKLANDS ISLANDS



HIGHLIGHTS

- Visit Port Stanley and Falkland Islands
- Top wildlife destination in the world with penguins, seals, albatrosses and lots of whales
- Icebergs and glaciated mountains with volcanoes
- Many Zodiac excursions and landings
- Small expedition ship that enables access to remote areas
- Onboard activities while at sea – lectures, quiz nights, workshops and wildlife spotting

ON THIS EXTRAORDINARY 18-DAY VOYAGE, follow in the wake of courageous explorer, Sir Ernest Shackleton to Antarctica and the South Shetlands before heading via Antarctic Sound, Weddell Sea and Elephant Island to South Georgia.

We will explore the Antarctic Sound with its mighty tabular icebergs and enter the Weddell Sea in search for Adelie and Emperor penguins. Sailing onwards between South Georgia and Elephant Island offers a small glimpse into the passage made famous by Shackleton 100 years ago, when he navigated the 1300km course through open seas of the Drake Passage in an effort to save his stranded crew. Active research stations, former whaling stations and a visit to Shackleton's final resting place are on our agenda. South Georgia is also home to the world's largest rookery of king penguins.

The sub-Antarctic and Antarctic islands are a nature photographer's paradise and we will attempt as many shore landings as possible per day, weather conditions permitting, bringing you close to Antarctica's beauty.

INCLUSIONS

- 18-day cruise with accommodation in a shared double cabin featuring suite facilities
- All Zodiac landings and excursions as per itinerary
- Expedition parka
- Rubber boot loan basis
- Guiding and lectures by our expedition leader and team
- English-speaking expedition team
- Full board on the ship – breakfast, lunch, dinner, snacks
- Free tea and coffee 24 hours daily
- Transfer to the airport in Ushuaia on disembarkation
- Taxes



ON THIS 11-DAY INSPIRING CRUISE, we explore the Great White Continent's magnificent landscapes, glacial mountains, and incredible wildlife before reaching 66°33" – the Antarctic Circle.

As our voyage begins, we pilot through the calm, gunmetal grey waters and sloping glaciers of the Beagle Channel. Turning southward, our journey begins in earnest, and we enter the Drake Passage.

In the Drake, the excitement builds as Antarctic wildlife comes into view. These nutrient rich waters lure a wealth of seabirds, albatrosses, and several species of whales. Weather permitting, we catch our first sight of seals and penguins!

With widen eyes, we will weave through the South Shetland Islands, a pearly necklace of glistening, ice-covered islands and dormant volcanoes. Numerous Zodiac excursions and landings are likely. We are constantly on the lookout for whales, sea lions, elephant seals and an unbelievable amount of sea birds and penguins.



INCLUSIONS

- 11-day cruise with accommodation in a shared double cabin featuring suite facilities
- All Zodiac landings and excursions as per itinerary
- Expedition parka
- Rubber boot loan basis
- Guiding and lectures by our expedition leader and team
- English-speaking expedition team
- Full board on the ship - breakfast, lunch, dinner, snacks
- Free tea and coffee 24 hours daily
- Transfer to the airport in Ushuaia on disembarkation
- Taxes

HIGHLIGHTS

- Reaching the 66°33" – the Antarctic Circle
- Top wildlife destination in the world with penguins, seals, albatrosses and lots of whales
- Icebergs and glaciated mountains with volcanoes
- Many Zodiac excursions and landings
- Small expedition ship that enables access to remote areas
- Onboard activities while at sea – lectures, quiz nights, workshops and wildlife spotting



SOUTH SHETLAND ISLANDS, ANTARCTICA - CROSSING CIRCLE



— ANTARCTIC DESTINATIONS —

ANTARCTIC DESTINATIONS



GIANTS OF THE SOUTHERN OCEAN: WHALE VOYAGE



THIS IS OUR FANTASTIC 9-DAY sunset voyage to the Great White Continent. Experience incredible whales, stunning mountain sceneries and gigantic icebergs in action-packed days on what we like to call a true expedition.

Once we hit mid to late March, we end our season with a truly unique experience. These shorter days with magical sunsets allow us to explore the isolated Antarctica more or less by ourselves, as the peace settles in. We do expect plentiful company in the form of humpback whales as their numbers peak in this part of the season. Wildlife is the highlight of a mid to late March trip as pictures of whales, seals, birds and penguins fill our SD memory cards.

Departing Ushuaia in Argentina, we cross the mighty Drake Passage en route for the South Shetland Islands, making Zodiac landings at fascinating places along the way. Taking our time to soak in all the beauty of these astonishing landscapes, we deploy kayaks and arrange hikes to get as close to the nature as possible.

HIGHLIGHTS

- Visit the Antarctic South Shetland Islands
- Explore the Antarctic Peninsula
- Top wildlife destination in the world with penguins, seals, whales and albatrosses
- Icebergs and glaciated mountains
- Many Zodiac excursions and landings
- Strong expedition ship that enables access to remote areas

INCLUSIONS

- 9-day cruise with accommodation in a shared double cabin, featuring suite facilities
- All Zodiac landings and excursions as per itinerary
- Expedition parka
- Rubber boot loan basis
- Guiding and lectures by our expedition leader and team
- English-speaking expedition team
- Full board on the ship - breakfast, lunch, dinner, snacks
- Free tea and coffee 24 hours daily
- Transfer to the airport in Ushuaia on disembarkation
- Taxes



ANTARCTIC DESTINATIONS

THE EPIC ANTARCTICA & SOUTH GEORGIA ADVENTURE



INCLUSIONS

- 18-day cruise with accommodation in a shared double cabin featuring suite facilities
- All Zodiac landings and excursions as per itinerary
- Expedition parka
- Rubber boot loan basis
- Guiding and lectures by our expedition leader and team
- English-speaking expedition team
- Full board on the ship - breakfast, lunch, dinner, snacks
- Free tea and coffee 24 hours daily
- Transfer to the airport in Ushuaia on disembarkation
- Taxes

ON THIS EPIC 18-DAY VOYAGE, we explore the South Shetlands and the Antarctic continent before heading via the Antarctic Sound and Weddell Sea for an extended South Georgia visit. The adventure ends in the Uruguayan capital of Montevideo, on board Ocean Albatros.

Departing from Ushuaia in Argentina, we cross the mighty Drake Passage en route for the South Shetland Islands and the Antarctic peninsula. Here we will make Zodiac landings at penguin rookeries, research stations and fascinating lookouts.

Sailing onwards between Elephant Island and South Georgia offers a small glimpse into the passage made famous by Shackleton 100 years ago, when he navigated the 1300 km course through open seas of the Drake Passage in an effort to save his stranded crew. South Georgia is one of world's greatest natural wonders. Wildlife-packed beaches, active research stations, former whaling stations and a visit to Shackleton's final resting place are on our agenda. This trip has an extended South Georgia itinerary, allowing us to see more than usual.

On our last leg we sail to Montevideo, the capital of Uruguay, allowing for easier flights onwards in South America or returning home. The last seadays can be spend bird watching from the top deck and attending lectures, workshops and photo re-caps in one of the ship's lounges.

HIGHLIGHTS

- Visit Port Stanley and Falkland Islands
- Top wildlife destination in the world with penguins, seals, albatrosses and lots of whales
- Icebergs and glaciated mountains with volcanoes
- Many Zodiac excursions and landings
- Small expedition ship that enables access to remote areas
- Onboard activities while at sea - lectures, quiz nights, workshops and wildlife spotting







EXPLORING BEYOND SOUTH AMERICA

Contact us

info@pure-chile.com

+56 9 5681 6943



sales@pure-argentina.com

+54 9 11 5642 0549

www.pure-travelgroup.com