



EXPLORING BEYOND SOUTH AMERICA

2024-25

# OCEAN NOVA

*Fly & Sail Expeditions*



[www.pure-travelgroup.com](http://www.pure-travelgroup.com)



# Antarctic Peninsula & South Shetland Islands



## Summary

- 3 Antarctica, an Expedition to Planet Earth
- 4 The Antarctic Air-Cruise
- 5 What Makes Antarctica Unique?

### 6 Itineraries

- 8 Itineraries at a Glance
- 9 Classic Antarctica Air-Cruise
- 10 Polar Circle Air-Cruise
- 11 Antarctica Express Air-Cruise

### 12 Vessels & Aircraft

- 13 Ocean Nova
- 15 Aircraft

### 16 Dates & Prices

- 17 Dates & Prices: Ocean Nova
- 19 Inclusions & Exclusions

### 20 Experiences & Adventures

- 21 Explorers House Expedition Center
- 23 The Pure! Antarctica Expedition
- 24 Sea Kayaking
- 25 Hiking & Snowshoeing in Antarctica
- 26 Life on Board

### 27 Planning Your Trip

- 28 Arrival & Departure Details
- 29 Hotel & Transfer Package
- 30 Packing for Your Trip
- 31 Useful Tips
- 32 Important Trip Details
- 33 Contingency Plan



# Antarctica, an Expedition to Planet Earth

## Landscape

A land that holds 90% of Earth's ice, Antarctica stuns visitors with its awe-inspiring beauty. See peaceful bays dotted with colossal icebergs; cruise along deep fjords and see massive glaciers; be amazed by sharp snowy peaks that jut out of the sea.

## Adventure

Feel the spray of seawater on your cheeks as you cruise in a Zodiac to shore. Follow in the footsteps of early explorers as you hike on Antarctic soil. Join our optional Sea Kayaking and Hiking & Snowshoeing programs.

## Wildlife

Penguins, whales, seals, and seabirds congregate in Antarctica during the austral summer. Present in large numbers, you can move along in their world and find endless inspiration for photographs.

## Memories

Setting foot on the seventh continent is a privilege and an honor. You will bring home unforgettable tales, and your journey will arouse the curiosity and admiration of your friends and family.



# The Antarctic Air-Cruise

We pioneered a new way to travel to Antarctica and what we believe is a better way – providing quick, intimate access to the White Continent.

Before Pure! Antarctica, travelers who wanted to reach the Antarctic Peninsula had only one option: a 2-day sail across the notoriously rough seas of the Drake Passage. However, since 2003, our boutique wilderness adventures have offered a more comfortable alternative.


## Fly the Drake

Our two-hour flight takes you from Punta Arenas, the Chilean gateway to Patagonia, directly to Antarctica, where you then board your expedition ship. No stormy crossing. No seasickness. Just quick, total immersion in your Antarctic adventure.


## Explore Antarctica

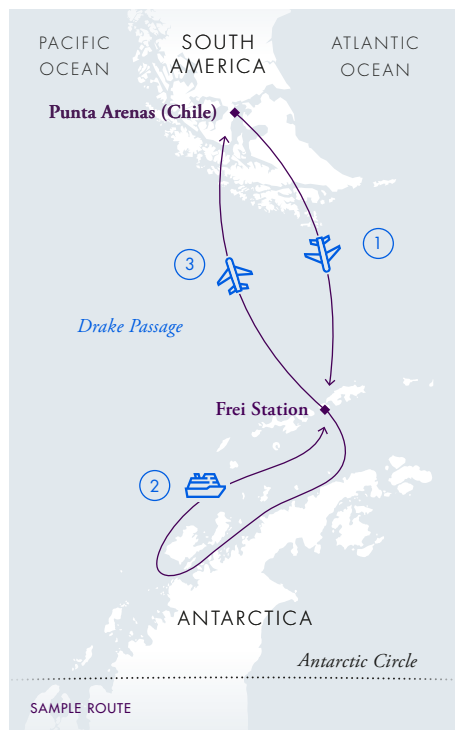
Our small expedition vessels are more like private yachts, offering direct access to areas along the Antarctic shore that larger ships simply can't reach. Since we have fewer guests, you get on and off faster, so your time ashore is focused where it should be: savoring every moment of a travel experience unlike any other.

### KEY BENEFITS

 **Comfort:** Avoid storms in the Drake Passage

 **Speed:** Get to Antarctica quickly and save time

 **Size:** Enjoy a small-ship, small-group experience



# What Makes Pure! Antarctica Unique?

As a niche specialist, we dedicate 100 percent of our time and resources to creating your Antarctic adventure.

## Air-Cruise Experts

We pioneered the air-cruise to Antarctica. That remains our focus. As specialists, we understand intimately how to coordinate air and sea operations in the changeable Antarctic environment. We have completed over 300 fly and cruise departures, more than any other company, and we bring that experience to your journey.

## Antarctica is our Neighbor

Our company was founded in Punta Arenas, Chile, the gateway for the first Antarctic explorers. As a local company in this remote region, we have built a solid infrastructure and an extensive network of key relationships to support your expedition.

## Explorers House: A Warm Welcome

Located only a few blocks from your hotel, The new Explorers House is your exclusive base in Punta Arenas. Feeling like a private club, it is a purpose-built open space where you can prepare for your expedition by attending briefings, practicing your Zodiac-boarding skills, shopping for expedition gear, and more.

## Flight Advantages

Unlike some companies, Pure! Antarctica uses a single flight to carry all guests on an expedition to and from the White Continent. We also have priority over the flight window, allowing us to choose the optimal flight time based on conditions. For you, this means efficient operations and a reduced chance of weather-related delays.

## Boutique Ships

Our small expedition ships welcome a maximum of 76 guests. That means disembarking and embarking in Antarctica is faster and smoother. You spend more time exploring, not waiting for your turn.

## High Staff-to-Guest Ratio

On every journey, our Pure! Antarctica team includes at least 12 expert polar guides, and their number one priority is ensuring you have an unforgettable experience. Our team knows the region's unique geography, natural history, wildlife, ecology and loves sharing their expertise with you.





# ITINERARIES







© R. Moraga



© R. Moraga



© M.E. Harris



# Itineraries at a Glance

During the 2024-25 season, Ocean Nova offers three air-cruise itineraries:

## Classic Antarctica Air-Cruise

8 DAYS / 7 NIGHTS

- Our most popular itinerary
- A complete Antarctic experience
- Frequent departures
- Starting at \$11,495 USD

## Polar Circle Air-Cruise

10 DAYS / 9 NIGHTS

- An in-depth expedition, explore farther, and see more
- Sail farther south to try and reach the Antarctic Circle
- Limited number of departures
- Starting at \$15,995 USD

## Antarctica Express Air-Cruise

6 DAYS / 5 NIGHTS

- Introductory and affordable
- Visit Cape Horn and Antarctica
- See a variety of seabirds, including albatrosses and giant petrels
- Starting at \$4,995 USD

Note: All prices listed here are per person based on triple occupancy.



# Classic Antarctica Air-Cruise

8 DAYS / 7 NIGHTS

## Itinerary

### Day 1 / Start of the air-cruise

Arrive in Punta Arenas, Chile, before 2 PM, where you are welcomed by Pure! Antarctica staff and transferred to your hotel. In the afternoon, you are welcomed at Explorers House to attend a mandatory briefing that provides important information about your air-cruise and reviews the essential guidelines for Antarctic visitors. Later, gather for a welcome dinner and meet your fellow adventurers while enjoying a typical regional menu.

### Day 2 / Scheduled flight to Antarctica

Your Antarctic adventure begins with a two-hour flight from Punta Arenas to King George Island, in the South Shetland Islands. As you exit the airplane, the clear Antarctic air fills your lungs for the first time. You then walk 2-km (1.25-miles), passing Chile's Frei Station and Russia's Bellingshausen Station to reach the shore and board a Zodiac that will take you to your boutique expedition vessel.

### Day 3-6 / Exploring Antarctica

Cruise between the South Shetland Islands and the western coast of the Antarctic Peninsula, sailing along ice-filled fjords and among spectacular icebergs, while enjoying the company of seabirds, penguins, seals, and whales. Each day disembark by Zodiac and explore the landscape together with expert polar guides. On board the ship, attend an engaging program of educational presentations, and enjoy spectacular views from the lounge while sharing your daily adventures with fellow guests.

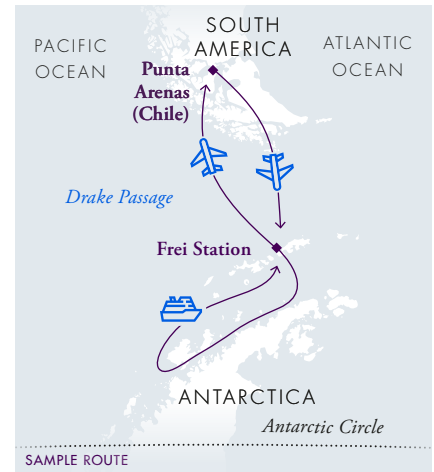
No journey is the same and flexibility is the key to success in Antarctica. The Expedition Team plans the voyage route to take advantage of the ever-changing opportunities provided by nature, crafting a unique and extraordinary experience every time. While the exact itinerary changes with each expedition, you will explore several sites that offer the best possible overview of the varied Antarctic environment. Your voyage may include visits to sites in the South Shetland Islands, the Antarctic Sound, the Gerlache Strait, and the Penola Strait.

### Day 7 / Scheduled return flight from Antarctica

Return to King George Island and bid farewell to Antarctica before boarding the flight back to Punta Arenas. Upon arrival, transfer to your hotel for the night. (Note: Meals in Punta Arenas are at your leisure and not included in the program).

### Day 8 / End of the air-cruise

After breakfast, transfer to the Punta Arenas airport for your onward flight.



# Polar Circle Air-Cruise

10 DAYS / 9 NIGHTS

## Itinerary

### Day 1 / Start of the air-cruise

Pure! Antarctica staff members welcome you in Punta Arenas, Chile, before 2 PM. Transfer to your hotel, visit Explorers House, and attend a mandatory briefing that provides important information about your air-cruise and reviews the essential guidelines for Antarctic visitors. A welcome dinner introduces you to the local gastronomy as you meet fellow adventurers from around the world.

### Day 2 / Scheduled flight to Antarctica

A smooth two-hour flight takes you from Punta Arenas to King George Island, in the South Shetland Islands. Your Antarctic adventure begins as you exit the airplane, and the clear Antarctic air fills your lungs for the first time. You then walk 2-kms (1.25-miles), passing Chile's Frei Station and Russia's Bellingshausen Station to reach the shore and board a Zodiac that will take you to your boutique expedition vessel.

### Day 3-8 / Exploring Antarctica

Sail along ice-filled fjords and among spectacular icebergs, while enjoying the company of seabirds, penguins, seals, and whales. Visit the South Shetland Islands and the western coast of the Antarctic Peninsula, disembarking by Zodiac each day. In small groups, hike to extraordinary sites and take part in exploratory Zodiac excursions to otherwise inaccessible areas. Our expert polar guides share their passion for Antarctica through an engaging program of illustrated presentations, and lead you ashore to interpret the wildlife, the history, and the many wonders of the Antarctic environment. Enjoy spectacular views, from the glass-enclosed lounge, while sharing your daily adventures with fellow guests over a drink.

The goal of this expedition is to sail far south in the attempt to reach the Polar Circle. The Expedition Team plans the specific voyage route based on local conditions and takes advantage of the ever-changing opportunities provided by nature. Flexibility will be the key to a successful voyage. Your voyage may include visits to sites in the South Shetland Islands,

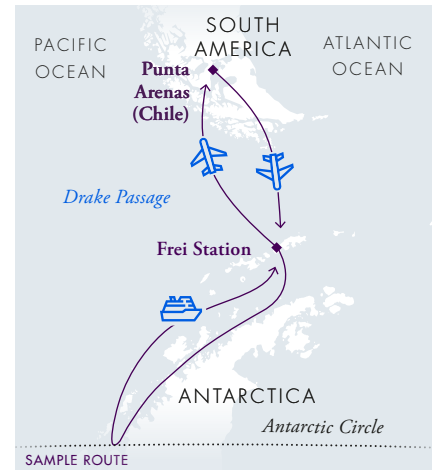
the Antarctic Sound, the Gerlache and Penola Straits, and the Crystal Sound. Each voyage is unique and crafted to provide the best possible overview of the varied Antarctic environment.

### Day 9 / Scheduled return flight from Antarctica

Back at King George Island, bid farewell to Antarctica as you board the flight to Punta Arenas. Upon arrival, transfer to your hotel for the night. (Note: Meals in Punta Arenas are at your leisure and not included in the program).

### Day 10 / End of the air-cruise

After breakfast, transfer to the Punta Arenas airport for your onward flight.





# Antarctica Express Air-Cruise

6 DAYS / 5 NIGHTS

## Itinerary

### Day 1 / Start of the air-cruise

Your journey begins in Ushuaia, Argentina, at the pier. Board your ship in the afternoon and sail along the Beagle Channel towards Puerto Williams, Chile, the southernmost town in the world. Explore the surroundings before setting sail to Cape Horn.

### Day 2 / Cape Horn and Drake Passage

After an overnight crossing of Nassau Bay, you awake in full view of legendary Cape Horn! Weather permitting, board a Zodiac and be one of the few privileged adventurers to step foot on this famous and rarely visited island. Back on board, set sail towards Antarctica and cross the famous passage named in honor of Sir Francis Drake, the great 16<sup>th</sup>-century British explorer.

### Day 3 / Drake Passage

As you sail through the Drake Passage en route to King George Island, in the South Shetland Islands, attend an engaging program of lectures and presentations. In the company of expert guides, watch for wildlife from the lounge or the outside decks. You may spot magnificent seabirds, such as albatrosses and petrels, as well as different species of whales on their way south to Antarctica.

### Day 4 / Drake Passage and Antarctica

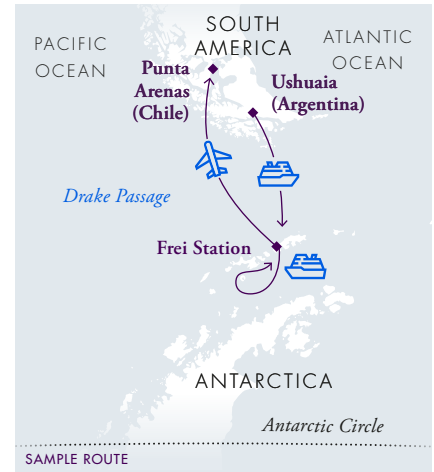
After crossing the Antarctic Convergence, the environment changes noticeably. Keep your camera ready, as this is the time to watch for the first icebergs and the first sight of Antarctic land. Reaching the South Shetland Islands, sail in ice-filled bays, while enjoying the company of seabirds, penguins, seals, and whales. Board a Zodiac for your first memorable shore visit to a penguin colony. Exploration will continue well into the evening taking advantage of the long Antarctic daylight.

### Day 5 / Antarctica and scheduled return flight

Upon reaching King George Island, disembark at Fildes Bay. A 2-km (1.25-mile) walk takes you through Chile's Frei Station and Russia's Bellingshausen Station to the aircraft. Bid farewell to Antarctica as you board the flight back to Punta Arenas. Upon arrival, transfer to your hotel for the night. (Note: Meals in Punta Arenas are at your leisure and not included in the program).

### Day 6 / End of the air-cruise

After breakfast, transfer to the Punta Arenas airport for your onward flight.



# VESSELS & AIRCRAFT





# Ocean Nova

## STRONG AND MIGHTY · ACTIVE ADVENTURE

Ocean Nova is a sturdy and nimble expedition vessel. This ship was built in Denmark in 1992 to sail the ice-choked waters of Greenland. It has an ice-strengthened hull that is ideally suited for expedition travel in Antarctica. Fully renovated in 2006, the ship has benefitted from annual upgrades and improvements since then.

The ship's outside cabins offer three categories of accommodation: dedicated Single Cabins, Twin Cabins, and Triple Cabins. All cabins feature a picture window, a writing desk with a chair, a wardrobe, an individually controlled heating system, and a private bathroom with a shower.

In addition to a glass-enclosed observation lounge and a presentation room, Ocean Nova also has a spacious dining room, a bar, a library, a small gym, and an infirmary. The ship has a fleet of 7 Zodiacs that are well suited for disembarking and wildlife watching.

### Specifications

**Passengers:**  
67 maximum on air-cruises

**Expedition Staff & Crew:**  
46

**Lifeboats:**  
2, fully enclosed, capacity of 110 (in addition to 4 life rafts, capacity of 100)

**Length:**  
73.0 m

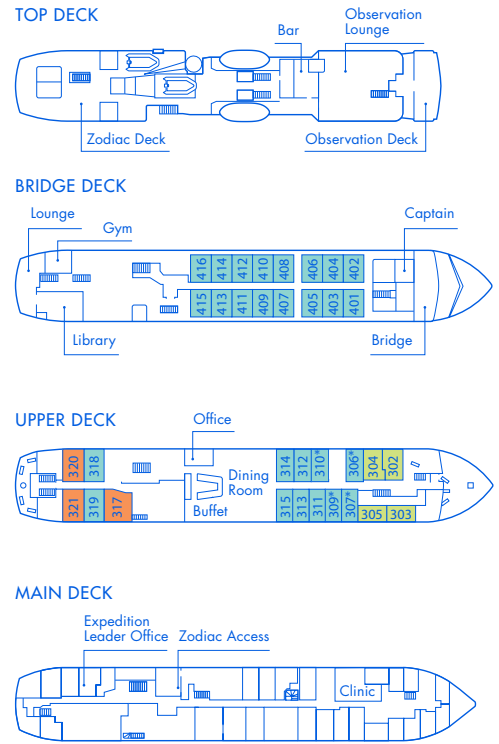
**Breadth:**  
11.0 m

**Draft:**  
3.7 m

**Propulsion:**  
Diesel engines,  
2,000-horsepower

**Ice Class:**  
1B, EO (Hull Ice 1A)

**Cruising Speed:**  
12 knots in open water



\* Queen-size bed



### Cabins

Category	Average size	Details
● Single Cabin	87 sq. ft 8 sq. m	One lower single bed
● Twin Cabin	106 sq. ft 10 sq. m	Two twin beds or one queen bed
● Triple Cabin	150 sq. ft 14 sq. m	Two lower beds and one upper bed





## A21 LOYALTY BENEFIT

The A21 Loyalty Benefit gives our returning travelers a 5% reduction on their next trip, including our Antarctic & Sub-Antarctic Sea Voyages. The reduction applies to all repeat travelers with Pure! Antarctica. We hope to see you again!

# Aircraft

## Specifications

**Model:**

BAE 146-200,  
AVRO RJ 85,  
AVRO RJ 100

**Capacity:**

76 passengers  
maximum

**Engines:**

4 turboprops Honeywell  
ALF 502R-5

**Length:**

93 ft 8 in (28.55 m)

**Cruise Speed:**

465 mph (750 km/h)

**Wingspan:**

86 ft 5 in (26.34 m)

**Service Ceiling:**

31,200 ft (9,500 m)

We use three similar aircraft for flight operations: the BAE 146-200, the AVRO RJ 85, and the AVRO RJ 100. These aircraft were manufactured in the United Kingdom by British Aerospace (which later became part of BAE Systems). They are high-wing aircraft with short runway requirements, which make them particularly suited for this kind of destination. It is operated by Aerovías DAP, which has more than 25 years of experience flying in Patagonia and Antarctica.

## Seating

**Category**

- Preferred – Reserved Seating
- Economy – Open Seating
- Seats not in use



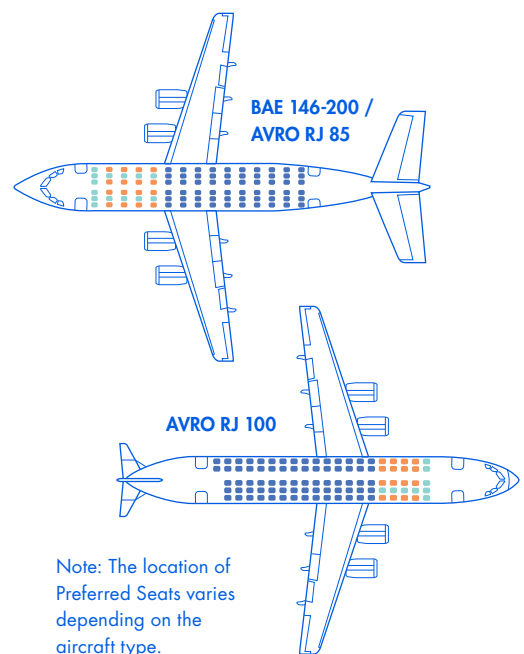
### PREFERRED SEATING ON THE ANTARCTIC FLIGHT

For an extra level of comfort, you can purchase Preferred Seats on your Antarctic flight. This option offers you a guaranteed aisle or window seat, priority boarding in Punta Arenas, and an amenities kit. Please note that due to the nature of the operation in Antarctica, priority boarding is not available on the return flight. Capacity is limited and the location of Preferred Seats varies depending on the aircraft type.

### Prices per person

- Classic Antarctica Air-Cruises (round-trip): \$495 USD
- Polar Circle Air-Cruises (round-trip): \$495 USD
- Antarctica Express Air-Cruise (one-way): \$245 USD

In the case of cancellation of Preferred Seating 120 days or more prior to departure, Pure! Antarctica will refund 50% of the amount paid. In the case of cancellation 119 days or less prior to departure, there will be no refund.





# DATES & PRICES





# Dates & Prices

## ABOARD OCEAN NOVA

Code	Start/End	Days/ Nights	Itinerary	Prices (USD)				
				Triple Cabin	Twin Cabin	Single Cabin	KAY	HS
OCN03-AE	Nov 29 - Dec 4, 2024	6/5	Antarctica Express Air-Cruise	\$4,995	\$5,995	\$6,995	—	—
OCN04-CA	Dec 2 - Dec 9, 2024	8/7	Classic Antarctica Air-Cruise	\$11,495	\$13,795	\$17,795	\$895	Available
OCN05-CA	Dec 7 - Dec 14, 2024	8/7	Classic Antarctica Air-Cruise	\$11,495	\$13,795	\$17,795	\$895	Available
OCN06-CA	Dec 12 - Dec 19, 2024	8/7	Classic Antarctica Air-Cruise	\$11,495	\$13,795	\$17,795	\$895	Available
OCN07-CA	Dec 17 - Dec 24, 2024	8/7	Classic Antarctica Air-Cruise	\$11,495	\$13,795	\$17,795	\$895	Available
OCN08-CA	Dec 22 - Dec 29, 2024	8/7	Classic Antarctica Air-Cruise	\$13,595	\$15,795	\$21,995	\$895	Available
OCN09-CA	Dec 27, 2024 - Jan 3, 2025	8/7	Classic Antarctica Air-Cruise	\$13,595	\$15,795	\$21,995	\$895	Available
OCN10-PC	Jan 1 - Jan 10, 2025	10/9	Polar Circle Air-Cruise	\$15,995	\$18,795	\$26,395	\$895	Available
OCN11-AE	Jan 14 - Jan 19, 2025	6/5	Antarctica Express Air-Cruise	\$4,995	\$5,995	\$6,995	—	—
OCN12-CA	Jan 17 - Jan 24, 2025	8/7	Classic Antarctica Air-Cruise	\$13,595	\$15,795	\$21,995	\$895	Available
OCN13-CA	Jan 22 - Jan 29, 2025	8/7	Classic Antarctica Air-Cruise	\$13,595	\$15,795	\$21,995	\$895	Available
OCN14-CA	Jan 27 - Feb 3, 2025	8/7	Classic Antarctica Air-Cruise	\$13,595	\$15,795	\$21,995	\$895	Available
OCN15-CA	Feb 1 - Feb 8, 2025	8/7	Classic Antarctica Air-Cruise	\$13,595	\$15,795	\$21,995	\$895	Available
OCN16-CA	Feb 6 - Feb 13, 2025	8/7	Classic Antarctica Air-Cruise	\$13,595	\$15,795	\$21,995	\$895	Available
OCN17-CA	Feb 11 - Feb 18, 2025	8/7	Classic Antarctica Air-Cruise	\$13,595	\$15,795	\$21,995	\$895	Available
OCN18-PC	Feb 16 - Feb 25, 2025	10/9	Polar Circle Air-Cruise	\$15,995	\$18,795	\$26,395	\$895	Available

KAY = Sea Kayaking. We recommend booking the Sea Kayaking program upon reservation of your air-cruise.

HS = Hiking & Snowshoeing is performed only in Antarctica. Available for booking on board the ship at \$85 USD per person, per excursion.

Note: Rates are per voyage and per person in US dollars, based on the selected cabin and occupancy.

### Deposit

An initial deposit of \$3,500 USD per person is required to book a cabin, except for Antarctica Express Air-Cruises, where the deposit is \$1,500 USD per person.

The balance is due in full 120 days prior to departure. Payments can be made by wire transfer or credit card via PayPal. Wire transfer costs are to be borne by the sender. Credit card payments via PayPal are subject to a 2.7% fee (however, the 2.7% fee is not charged on the deposit). Payments received after the due date are subject to a \$250 USD per person late payment fee.

### Children

Children are admitted from the age of 8 years if accompanied by an adult who will take responsibility and sign a waiver. A 5% discount on the rate per person is offered for children up to 12 years.

### Single Travelers

Booking a dedicated Single Cabin: No supplement is applied for single use of dedicated Single Cabins. Booking a Twin Cabin for single use: An 85% supplement will be added to the rate per person when booking a limited number of Twin Cabins on Ocean Nova. A 100% supplement applies when booking all other categories.

- Pure! Antarctica will take care of finding the matching companion. Passengers who book a Twin Cabin on a shared basis are accommodated in single rooms at the hotel in Punta Arenas. Those passengers must pay a Single Hotel Room Supplement that varies based on the departure selected. Please inquire at the time of reservation.

Note: Single travelers who use CPAP machines or other assistive devices, as well as those who have conditions that can be disrupting to others (loud snoring, sleepwalking, etc.), can only book their air-cruise in a Single Cabin or a Twin Cabin for single use. They cannot book on a twin-share basis.



### Charters and Reservations by Groups

Full-ship charters and reservations made by and for groups of 8 travelers or more are subject to payment and cancellation conditions to be agreed upon contract.

### Cancellation

Cancellation of a reservation must be done in writing. The following terms will apply:

- Cancellation received up to 180 days prior to departure: there will be a full refund of the deposit received, less a \$1,000 USD per person processing fee that will be retained by Pure! Antarctica.
- Cancellation received between 179 and 120 days prior to departure: there will be no refund of the deposit paid.
- Cancellation received between 119 and 90 days prior to departure: there will be a refund of 10% of the amount paid, provided that the final payment has been received.
- Cancellation received between 89 and 60 days prior to departure: there will be a refund of 7.5% of the amount paid, provided that the final payment has been received.
- Cancellation received between 59 and 30 days prior to departure: there will be a refund of 5% of the amount paid, provided that the final payment has been received.
- Cancellation received between 29 and the departure date: there will be no refund whatsoever.

Upon cancellation, the passenger releases the canceled cabin back to Pure! Antarctica.

Pure! Antarctica strongly recommends all guests to protect their travel investment by purchasing a trip cancellation and interruption insurance policy as protection against unforeseen events.

# Inclusions & Exclusions

## Included in the Rate

- For air-cruises starting in Punta Arenas, Pure! Antarctica exclusive group transfers airport/hotel on Day 1. For air-cruises starting in Punta Arenas, one overnight with breakfast in Punta Arenas at the Cabo de Hornos Hotel or similar, with a welcome dinner including drinks on Day 1.
- One overnight with breakfast in Punta Arenas at the Cabo de Hornos Hotel or similar on the day of the scheduled return flight from Antarctica.
- For air-cruises starting in Punta Arenas, enjoy special access to Explorers House.
- Pure! Antarctica-exclusive group transfers airport/hotel on the day of the scheduled return flight from Antarctica, and Pure! Antarctica-exclusive group transfers hotel/airport on the last day of the air-cruise.

- Flight from Punta Arenas to Frei Station on King George Island and/or vice versa as indicated in the program corresponding to each voyage.
- Ship cruise as indicated in the program corresponding to each voyage.
- Daily buffet breakfast and lunch on board the ship offering a wide choice of dishes.
- Dinner served daily on board the ship offering a choice between one of three main courses.
- Wine, beer, juice, and soft drinks served with lunch and dinner on board.
- Coffee, tea, chocolate, cappuccino, water, and snacks on board the ship throughout the expedition.
- All guided shore excursions.
- Lectures and entertainment on board.
- Comprehensive pre- and post-voyage information material.
- Loan of waterproof boots for landing in Antarctica.
- Contingency Plan as described on page 39.
- IAATO passenger fee.

## Not Included in the Rate

Anything that is not specifically listed under the “Included in the Rate” section. For example:

- Accommodation, meals, excursions, and transfers other than those included in the itinerary and the Contingency Plan corresponding to each voyage. Specifically, dinner in Punta Arenas upon return from Antarctica is not included.
- Beverages purchased at the ship’s bar.
- Internet connection on board the ship.
- Personal travel insurance.
- Extra expenses (communication, laundry, souvenirs, etc.).
- Gratuities.
- Visas for Chile and/or Argentina, passport expenses, and any arrival and/or departure tax, if applicable.





# EXPERIENCES & ADVENTURES





# Explorers House

## EXPEDITION CENTER

An expedition to Antarctica is an experience like no other and success depends on preparation.

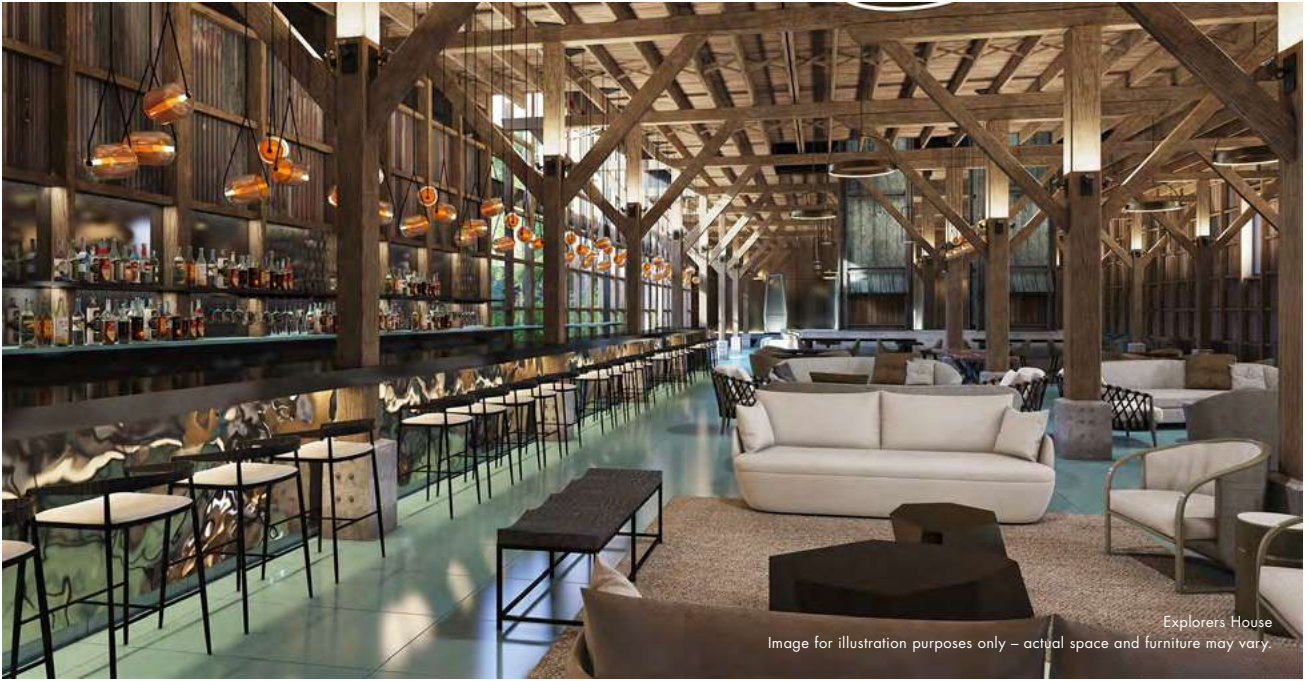
Explorers House is an exclusive facility in Punta Arenas where our team helps you prepare for your expedition. You can attend briefings, try on expedition gear, practice wearing a life jacket, and learn how to board a Zodiac. At Explorers House you can interact with our team, review checklists, and get answers to any questions you may have about your

trip, so you will be ready and confident when you arrive in Antarctica.

Explorers House also functions as our own private club. It provides a modern environment where you can relax with a cup of coffee, review a wonderful collection of Antarctic books, and get to know your travel companions as excitement over the upcoming adventure builds. Explorers House was designed by renowned architects and was built using green building practices. It features a commercial solar panel system to produce electricity and heat.







Explorers House  
Image for illustration purposes only – actual space and furniture may vary.



Explorers House  
Image for illustration purposes only – actual space and furniture may vary.



# Ocean Nova Expedition Experience



Mariano Curiel  
Director of Expedition Operations

Mariano Curiel, Director of Expedition Operations, talks about the expedition experience in Antarctica.

## What makes a trip an “expedition”?

The word expedition refers to a journey undertaken by a group of people with a particular purpose, such as exploration or research. With a lot of preparation and just as much flexibility, we lead expedition travelers to Antarctica to deepen their understanding of this remote and otherworldly place.

## What surprises Antarctic travelers the most?

In my experience, the most significant impact comes from being exposed to such majestic expressions of nature. In the remote and extreme Antarctic environment, travelers see and feel things that go beyond what they know and are used to in their daily lives. It's the same planet but feels different. For many, it is a life-changing experience.

## How do you put together the expedition team?

Members of our expedition team must be able to perform at the highest level in extreme conditions for extended periods of time. Our mission is to connect our guests to the places we explore. To become that link, the team not only needs hard technical skills, and experience, but empathy, which allows them to feel and understand the emotions of our guests. We focus on building diverse teams in terms of gender, nationality, skills, backgrounds, etc. Finally, we look for people who feel deep respect for the Antarctic environment. A team needs to be confident in their plans but ultimately humble to the forces of nature. It's a unique profile we look for.

## Pure! Antarctica only runs small-scale trips, with a maximum of 76 guests. How does that shape the experience?

It gives us several advantages. To begin with, the connection to the places we visit is qualitatively different: less noise, less distraction, a more intimate experience. Then, there is our flexibility: in extreme environments, the only guarantee is that there are no guarantees and plans will have to change. Our small-scale expeditions afford us a lot of flexibility, which is a huge operational advantage. It results in better daily routines. But probably the most important point is that we can establish a personal connection with our guests. We speak with them, we listen, share, and find out what they are experiencing during their trip. That gives us a chance to adapt our plans so that our guests are not simply “passengers” but become active participants in their trip.



# Sea Kayaking

Experience Antarctica from the unique vantage point of a sea kayak. The majestic landscape, the icebergs, and the wildlife look different as you paddle quietly through the icy waters.

## The Program

The sea kayaking program is an optional small-group experience limited to a maximum of 10 participants. The group enjoys multiple excursions throughout the voyage, under the guidance and leadership of an experienced Kayak Master.

Every day in Antarctica, your Kayak Master will work with the Expedition Team to look for the best kayaking opportunities based on suitable and safe weather conditions. A dedicated safety Zodiac will support the group. Each kayaking excursion will be approximately one and a half hours. The Kayak Master will strive to offer some time at the landing site so you can also explore on land.

To take part in the kayaking program, you must have previous experience and know how to swim. The minimum age for participation is 16 years. Space is limited.

For complete details, please review the “Sea Kayaking” document, which is available upon request.

**Ocean Nova: \$895 USD per person**  
[Book at the time of reservation](#)

Notes: Sea Kayaking is offered as a full program of excursions delivered throughout the expedition to the same group of participants. It is not possible to join individual, one-off kayaking excursions or rotating participation among family members or groups of friends traveling together.

Payment of the sea kayaking participation fee is due at time of reservation. In the case of cancellation 120 days or more prior to departure, Pure! Antarctica will refund 50% of the participation fee. In the case of cancellation 119 days or less prior to departure, there will be no refund.



# Hiking & Snowshoeing in Antarctica



See more of the Antarctic landscape with our Hiking & Snowshoeing program. Excursion locations are selected for their scenic appeal and will provide unique vantage points for your photographs.

## The Program

The Hiking & Snowshoeing program is an optional small-group experience offered on board the ship as a one-off excursion. A Hiking & Snowshoeing Guide leads the group.

Every day you are in Antarctica, the Hiking & Snowshoeing Guide will work with the Expedition Leader to look for the best hiking or snowshoeing opportunities within the trip's schedule, based on suitable and safe weather conditions. Each excursion will be approximately one and a half hours in duration. Depending on the conditions of the terrain, some excursions may require the use of snowshoes and/or trekking poles, which Pure! Antarctica provides. Participants can select the excursions they want to join, paying a per-excursion fee. The activity can be booked and paid on board the ship.

To take part in the Hiking & Snowshoeing program, you do not need previous experience. However, your level of physical fitness should be good. The minimum age for participation is 12 years.

For complete details, please review the "Hiking & Snowshoeing in Antarctica" document, which is available upon request.

**\$85 USD per person, per excursion**

[Book on board](#)



# Life on Board

Sandra Walser, Lead Cruise Manager, talks about the experience aboard our expedition ships.

## What is life like on an Pure! Antarctica ship?

The ship is our base, a welcoming place to return to after our excursions. Our goal is to make it feel like your home away from home. We deliver a boutique hospitality experience that is personal, comfortable, and flexible. You can enjoy the privacy of your cabin, or socialize in the lounge, find a space for quiet contemplation in the library, or you can join fellow travelers on deck. Our team interacts with guests throughout the journey, sharing their knowledge and keeping everyone briefed on the trip's progress.

## How is the dining experience on board?

Onboard dining gives you a chance to get to know your travel companions and make new friends. With different sized tables and no pre-assigned seating, you can choose to sit privately or join a group; the choice is yours.

Our chefs care about flavor and detail. In the remoteness of Antarctica, they may surprise you with a fresh sprig of rosemary as decoration. All meals offer a variety of choices that appeal to many tastes, including several main courses and side dishes, salads, fruits, and pastries. Our waitstaff serves a full selection of drinks. Beers and premium Chilean wines are included with lunch and dinner. Depending on cruising conditions, a barbecue on deck may be offered.

## How are Pure! Antarctica ships different?

At Antarctica21, we pride ourselves on offering expert and welcoming service on board all our ships. On each ship you can expect a similar expedition program and hospitality experience: briefings, presentations, social time in the lounge, access to the bridge, and daily cabin service are offered with the same standards of excellence. In all cabins we provide a reusable water bottle, refreshing bath products, chocolates at turn down, and more.



## Ocean Nova

Ocean Nova offers an informal base for adventurous travelers. The ship's strong hull and excellent maneuverability provide an exceptional expedition experience at a more affordable price. No matter which one of our small ships you choose for your Antarctica expedition, our goal is to ensure that you enjoy a friendly atmosphere, comfortable cabins, and common areas with knowledgeable and helpful staff.



Sandra Walser  
Lead Cruise Manager



A large, sculpted blue iceberg dominates the background, its surface showing various textures and shadows. In the foreground, a whale's tail fluke is captured mid-splash, creating white foam and water droplets. The water is a deep, clear blue. The overall scene is set in a bright, clear sky.

# PLANNING YOUR TRIP



# Arrival & Departure Details



Review the important details below about arrival and departure for your air-cruise, and make your travel plans accordingly. Ask your booking agent for assistance as needed.

## Getting to Your Antarctic Getaway

Depending on your air-cruise itinerary, you will be using Punta Arenas, Chile or/and Ushuaia, Argentina as your Antarctic gateway. Many international airlines land daily at Santiago's Arturo Merino Benitez airport. From there, several airlines connect the capital of Chile and Punta Arenas.

Many international flights also land daily at Buenos Aires' international airport, Ezeiza. Connections to Ushuaia are available from Ezeiza airport and the domestic Aeroparque Airport. Overland transportation by bus between Punta Arenas and Ushuaia, a 12-hour journey, is also available.

## Trips Starting in Punta Arenas

If you are joining an air-cruise starting in Punta Arenas, you must plan to arrive with a flight that is scheduled to land in Punta Arenas no later than 2 PM on Day 1 of the itinerary. The same deadline applies to travelers arriving directly at the hotel on Day 1.

That afternoon, all travelers must attend a mandatory safety and Antarctic guidelines briefing and an information session covering important and practical details. You will also receive guidance on sizing and the delivery process for your expedition boots. Participation in these activities is essential for the success of the expedition.

Travelers who miss the 2 PM arrival deadline will be considered "no-show", and they will not be able to participate in the expedition and will receive no refund.

Remember that scheduling tight connections is never wise when traveling to remote places with limited services. Protect your travel investment by building some buffer in your travel plans in case of problems with luggage delivery, flight delays, etc. In case your flight to Punta Arenas is delayed for reasons beyond your control, Pure! Antarctica will do everything possible to accommodate your late arrival. However, Pure! Antarctica cannot assume any responsibility for any resulting complications, including your inability to join the expedition. We recommend that you purchase a trip cancellation and interruption insurance policy to cover this risk.

## Trips Ending in Punta Arenas

Pure! Antarctica strongly suggests that any travel plans made for the last day of the expedition do not start until the late afternoon and that a flexible air ticket be held for your journey home in case you need to change your travel arrangement following a delay of the return flight from Antarctica. Please ask your travel consultant for assistance. See also the sections on possible flight delays and related contingency plans outlined on page 39.

## Trips Starting in Ushuaia

For Antarctica Express Air-Cruises: boarding in Ushuaia is between 3 PM and 4 PM, directly at the pier. Boarding will close at 4 PM.

## Trips Ending in Ushuaia

Arrival back in Ushuaia is planned for the morning. However, delays are possible. Pure! Antarctica strongly suggests that any travel plans made for the last day of the expedition do not start until the late afternoon.



# Hotel & Transfer Package

Most air-cruises start and end in Punta Arenas. Should you wish to arrive in Punta Arenas a day earlier or spend an extra night after you return from Antarctica, we offer a convenient Hotel and Transfer Package.

The package includes accommodation at the Cabo de Hornos Hotel or similar and combines perfectly with your Antarctic air-cruise. With a single check-in you will ensure that the hotel room for your extra night in Punta Arenas is the same as that included in your air-cruise itinerary.

The package is available pre-expedition and post-expedition and includes:

- Dedicated group airport transfers
- 1-night hotel accommodation
- Breakfast
- Drink voucher

## Per-person price

[Please inquire at time of reservation](#)

## Cancellation Conditions

In the case of cancellation 120 days or more prior to departure, Pure! Antarctica will refund 50% of the amount paid. In the case of cancellation 119 days or less prior to departure, there will be no refund.

Please note that Pure! Antarctica only offers airport transfers as part of its packages. Pure! Antarctica does not arrange individual airport transfers.



# Packing For Your Trip

## Suggested Clothing

During the austral summer the average temperature in the Antarctic Peninsula area is about 0°C (32°F), although sometimes it may feel lower because of the wind chill factor. For this reason, it is best to wear several layers of light, warm clothing. The suggested clothing for Antarctica is very similar to that recommended for skiing: thermal underwear, a couple of warm and wicking mid-layers, a windproof and waterproof jacket, plus pants as the outer layer. You will also need a hat, a scarf, waterproof and insulated gloves, and sunglasses with high UV protection. The pre-departure material provides further details. We also suggest packing comfortable clothes to wear on board, as well as rubber-soled shoes for walking around on the outside decks.



## EXPEDITION JACKET

Our Signature Waterproof Expedition Jacket has been hand-selected for you as the perfect, technical outer shell for use on our Antarctic air-cruises.

Designed for a wide range of outdoor activities, the Ghost Pro jacket by Ansilta® is compact and lightweight. This versatile garment is ideal when impermeability and breathability are needed. The jacket has a slim and minimalist design, providing a very comfortable fit. It is made with GORE-TEX® fabric combined with Gore C-KNIT Backer Technology, which improves breathability by up to 15% through a less bulky and more robust 3-layer construction.

# Useful Tips

## Waterproof Boots

On the first day of your program, Pure! Antarctica staff will deliver a pair of boots for landing in Antarctica. Boots are provided at the hotel to guests booked on voyages starting in Punta Arenas. For guests departing from Ushuaia, boots will be distributed on board the ship. Boots are provided on loan and will be collected before the end of the trip.

## Face Protection

Good quality UV filtering sunglasses are essential. Glacier glasses have leather flaps at the sides to stop the light from passing through. Due to the high reflectance of UV radiation, you will also need good sunblock lotion for your face (protection factor 30 and above) and lip balm.

## Photography

To see the wildlife, you should have a good pair of lightweight binoculars (the suggested magnification is 7× or 8×). If you are passionate about photography, do not forget a good zoom lens to shoot wildlife while avoiding close approaches. Also, pack a good supply of memory cards and spare batteries since cold temperatures can reduce their life span. The recreational use of drones is not allowed in Antarctica.

## Travel Requirements

All travelers should check the entry requirements, including vaccinations and visa terms, of the countries visited during their trip, based on their nationality. Antarctica Express Air-Cruises visit Argentina and Chile so the requirements of both countries should be considered.

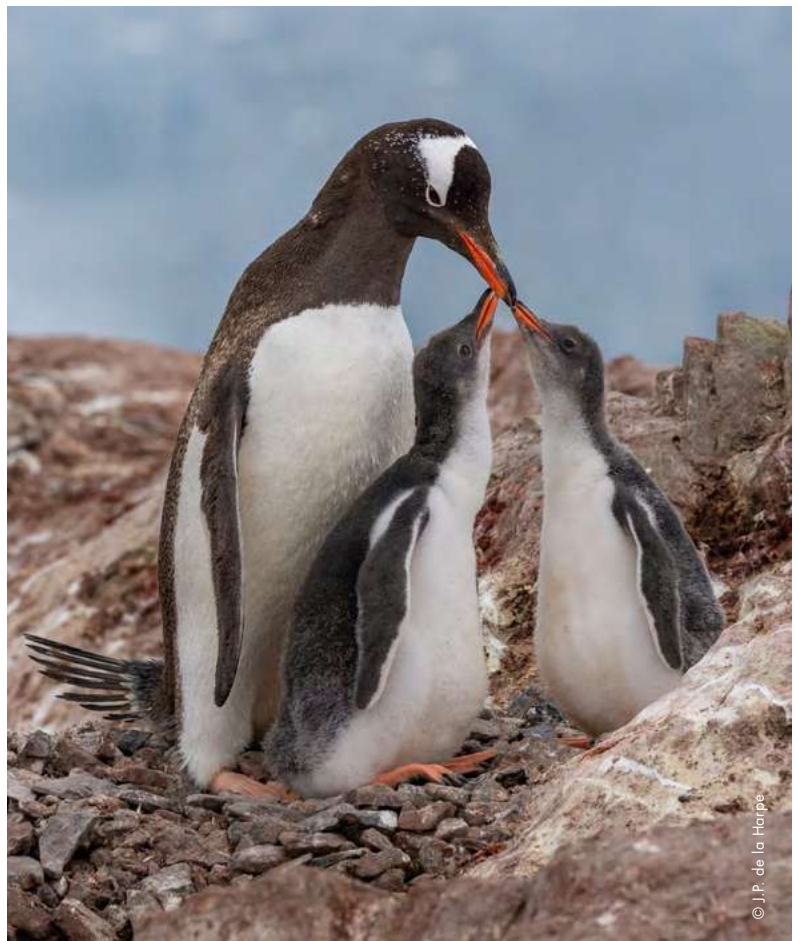
## Dietary Information

Requests regarding diets must be made on the Participation Form you receive after your booking confirmation. This information will be passed along to our staff so they can accommodate your needs while on your voyage. Note: Due to the nature of our expeditions and the kitchens onboard the ships, Kosher and vegan meals cannot be accommodated.



## IMPORTANT PRE-TRAVEL REMINDERS

- Submit your participation form 120 days prior to your trip
- Book flights according to the required arrival and departure times
- Purchase travel insurance, including medical evacuation and pandemic related coverage
- See the clothing and gear recommendations
- Check the validity of your passport and obtain any required entry visas
- Ensure that your total luggage weight, including carry-on luggage, does not exceed the 20 kg (44 lbs) limit
- Review the Contingency Plan applicable to Antarctic flight delays





# Important Trip Details

## The Nature of Expedition Travel

Our air-cruise expeditions are suitable for adventurous travelers who enjoy full mobility and reasonably good health. Expedition travel to Antarctica requires flexibility and adaptation to ever-changing circumstances. There is no airport or port infrastructure at King George Island, or anywhere in the Antarctic Peninsula. After landing and a walk to shore, travelers reach their ship by Zodiac.

## Your Travel Companions

Pure! Antarctica offers its expeditions worldwide. Each year we welcome travelers from over 40 different countries. They may travel alone, as a family, or as part of a group. While some of your traveling companions may speak different languages and have different customs, they will share your passion for adventure and interest in the natural world.

## Participation Form

Participants are required to fill out and submit an online Participation Form and return it to Pure! Antarctica at least 120 days prior to departure. Based on the medical information provided in the form, Pure! Antarctica's Medical Director may request a medical certificate. All participants 75 years of age and older must submit a medical certificate.

## Medical Insurance

Pure! Antarctica requires participants to be adequately covered by a travel insurance policy that covers aero-medical evacuation from Antarctica in the case of a medical emergency during the trips, including emergencies related to pre-existing health conditions and pandemics.

## Cancellation Insurance

Pure! Antarctica strongly urges participants to be adequately covered by trip cancellation and interruption insurance.

## Itinerary

Every effort will be made to adhere to the planned program. However, with this type of adventurous travel to Antarctica, changes to the itinerary may occur due to severe and changeable weather. We need to emphasize the fact that weather conditions are unpredictable, and safety is always the paramount concern on any Antarctic voyage. For this reason,

Pure! Antarctica reserves the right to change the itinerary described due to weather conditions or other factors beyond Pure! Antarctica's control without consulting the participants.

## Baggage and Baggage Allowance

We recommend that clients avoid expensive designer luggage that is easily damaged. We also strongly recommend that clients take out a luggage insurance policy that covers the cost of repairs or replacement in case their luggage is damaged. Due to the nature of the expedition, and as stated in our Terms and Conditions of Sale, Pure! Antarctica cannot be responsible for any damage to a customer's luggage.

The maximum weight allowed on the flights to and from Antarctica is 20 kg (44 lbs) per person, including hand luggage. For Classic Antarctica and Polar Circle Air-Cruises, excess luggage will be kept in custody in Punta Arenas and returned to travelers after their time in Antarctica. For the Antarctica Express Air-Cruise, excess luggage will be disembarked at Puerto Williams and sent to Punta Arenas by air cargo at the traveler's expense. It will be available for pick up in Punta Arenas upon the traveler's return from Antarctica.

The baggage weight limit is a technical requirement imposed by the flight operation. Unfortunately, it is not possible to purchase extra allowance.

Note: At certain points during the expedition, you will be required to handle your own luggage.

## Expedition Language

The official expedition language of our air-cruises is English. The voyage will take travelers to remote destinations where interaction with our polar guides is essential. In the interest of safety and for the enjoyment of the experience we strongly recommend that travelers who do not understand English be accompanied by someone who does, such as a friend, a family member, or a Tour Leader.

## Antarctic Flights and Contingency Plan

Flights to and from Antarctica operate based on weather conditions. Occasionally, flight plans have to be adjusted, impacting itineraries. Carefully review page 39 and the Terms & Conditions located on our website and check the Contingency Plan applicable to your voyage. Speak to your booking agent if you have any questions.

# Contingency Plan

Pure! Antarctica has been organizing Antarctic air-cruises since 2003. Over these years we have gained extensive experience in the delicate coordination of land, air, and sea operations in the extreme Antarctic environment. While historically most flights have operated on the scheduled day, in some instances weather conditions have required that adjustments to the departure time of Antarctic flights be made to avoid protracted delays. In the unlikely event that the flight to or from Antarctica cannot take place on the scheduled day due to unfavorable weather conditions, we will apply a Contingency Plan.

The Contingency Plan is included in the cost of your expedition. The primary goal of the plan is to provide an engaging and comfortable travel experience while we adapt to the weather and we keep you informed of developments, whether in Punta Arenas or Antarctica. A change in the flight schedule can impact travel to Antarctica or return to Punta Arenas, and the plan includes a range of activities determined by the circumstances. Additionally, the Contingency Plan offers you financial protection by providing a refund should weather conditions prevent us from reaching Antarctica.

## The Highlights

### In case the outbound flight to Antarctica is moved forward

In some cases, it may be necessary to move forward the Antarctic flight to the afternoon or evening of Day 1 of the itinerary. This will result in an early departure from Punta Arenas and early arrival in Antarctica. It is one reason why it is important that guests arrive in Punta Arenas by 2 PM on Day 1 of the itinerary. Travelers who miss the 2 PM arrival deadline will be considered “no-show”.

### In case the outbound flight to Antarctica is delayed

The group will remain in Punta Arenas while waiting for an improvement in the weather and for the opportunity to fly to Antarctica. Included are accommodation, meals, and, when possible, based on the circumstances, guided excursions to local attractions. If by 2 PM on Day 4 of the itinerary it is still impossible to depart for Antarctica, the trip will be interrupted, and the cruise fare will be refunded.



### In case the return flight to Punta Arenas is moved forward

In those cases when the forecast suggests the likelihood of unfavorable weather conditions in Antarctica persisting for several days, the flight back to Punta Arenas may be moved forward to the previous day to avoid a protracted delay in Antarctica. Accommodation is included upon arrival. All other inclusions will remain per the original itinerary. No refund will be extended.

### In case the return flight to Punta Arenas is delayed

The group will remain in Antarctica and wait for the opportunity to fly to Punta Arenas. In the unlikely event that the delay exceeds 2 days and the weather forecast indicates the impossibility to fly over several more days, the captain of the vessel may decide to sail back to South America for safety reasons. Included are meals and accommodation on the ship and local excursions. Upon arrival in Punta Arenas, the trip will end at the airport. Travelers are responsible for any expenses associated with the rescheduling of their airline tickets or onward travel plans.



---

EXPLORING BEYOND SOUTH AMERICA



+56 9 5681 6943



info@pure-chile.com